

# MOTORIZED SHADES WITH VIRTUAL CORD™

## Table of Contents

### Features

Motorized Blind and Shade Features . . . . .	2
Radio Frequency (RF) Features . . . . .	2
Single-Channel Remote Mounting Options . . . . .	3
Multi-Channel Remote Mounting Options . . . . .	3

### Size Considerations

CrystalPleat® Cellular and Pleated Shades Motorized Lift . . . . .	4
Fresco® Roman Shades Motorized Lift . . . . .	5
Tradewinds® Natural Shades Motorized Lift . . . . .	6
Artisan Soft Shades Motorized Lift . . . . .	7
Mezzanine Layered Shades Motorized Lift . . . . .	8
Light Gap . . . . .	8
Overture Sheer Shades Motorized Lift . . . . .	9
Light Gap . . . . .	9
LightWeaves® Roller and Solar Shades Motorized Lift . . . . .	10
LightWeaves Roller and Solar Shades: 12 Volt Motor Maximum Shade Size . . . . .	11-12
LightWeaves Roller and Solar Shades: Dual Shades Maximum Shade Size . . . . .	13-14

### Options

Virtual Cord Power Considerations . . . . .	15-16
Virtual Cord Power Components . . . . .	17
Radio Frequency (RF) Controls . . . . .	18

### Price Charts and Options Pricing

Virtual Cord . . . . .	19
Virtual Cord Motor Package Pricing: Includes Motor, Power Source, and Control . . . . .	19
Virtual Cord Motor Pricing . . . . .	19
Motor Pricing . . . . .	19
Virtual Cord Power Sources . . . . .	19
Virtual Cord Motorization Controls . . . . .	19

# GRABER®

UNITED STATES PRICE LIST • FEBRUARY 2019

# Features

## Motorized Blind and Shade Features

Refer to individual price list for specific option and size information for the product being ordered.

**NOTE:** Not every product will have a Virtual Cord™ control remote.

## Radio Frequency (RF) Features

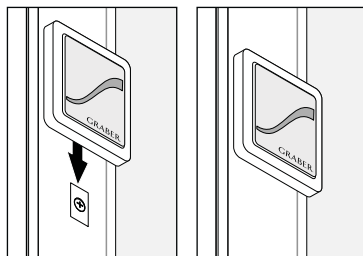
Graber® Virtual Cord motorized shades feature advanced radio technology which provides reliable, effortless operation of window coverings. The radio technology utilized is Z-Wave which is supported by an alliance of countless smart home products and home automation providers making integration simple and inexpensive. Graber Virtual Cord motorized shades are quiet, simple to install and adjust, and simple to operate. These automated shades also feature:

- Simple, intuitive control by means of the unique Virtual Cord control (optional)
- Single-channel and multi-channel remotes are also available to control shades individually or in a group
- Shades can be conveniently operated from virtually anywhere in the home, up to 65 feet (19.9 m)
- Consistent motor speed regardless of size or weight
- Efficiently manages energy (heat gain and loss)
- A safer alternative to accessible cords that are traditionally used to operate window coverings; ideal for homes with children and pets
- Clean design with LED operation confirmation
- Push button control on shade end cap provides both a programming function at set-up and shade operation should the control be misplaced
- LED feedback on controls simplify operation and programming
- Quiet, smooth shade operation
- Limit safety protection feature simplifies reprogramming, should it be necessary, while protecting the shade from damage
- Convenient soft-start and soft-end add a touch of class to shade travel
- Low voltage motorization requires no costly electrical hard-wiring
- Home automation is simple to integrate with motorized shades

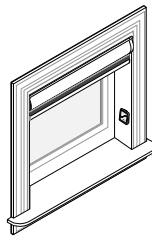


### Control Options Available

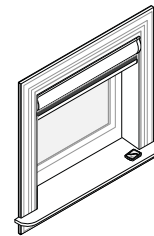
- Virtual Cord: simple, convenient control at the window shade location or control across the room



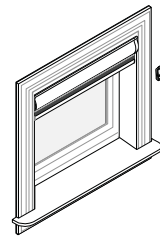
Virtual Cord Control



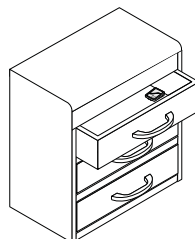
Attached to the Window Molding



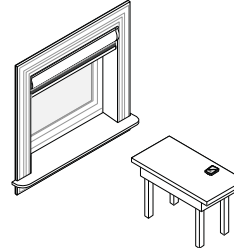
Attached to the Window Sill



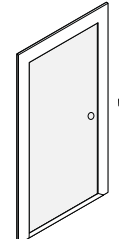
Attached to the Wall



Store in a Drawer



On a Table



Mounted by the Door

- Single-channel remote: control can be conveniently mounted or placed on a table and controlled from anywhere in the room
  - Create group shade control
  - Set and control an intermediate position (home)



Single-Channel Remote Control

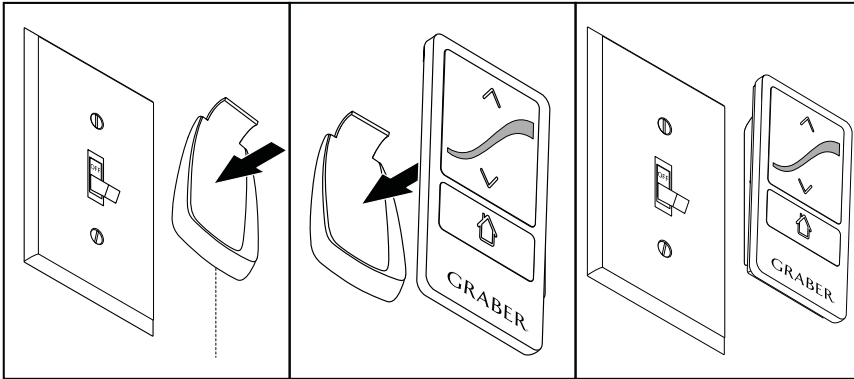
- Multi-channel remote: control can be conveniently mounted or placed on a table and controlled from anywhere in the room
  - Individual shade control
  - Create group shade control
  - Set and control an intermediate position (home)



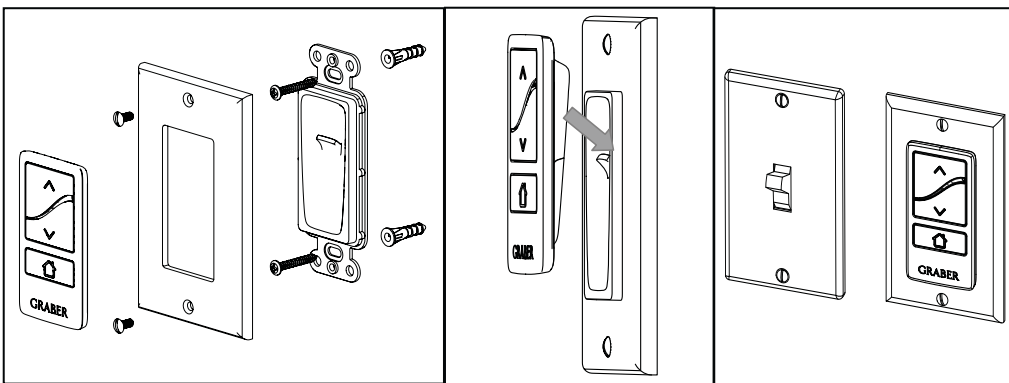
Multi-Channel Remote Control

# Features

## Single-Channel Remote Mounting Options

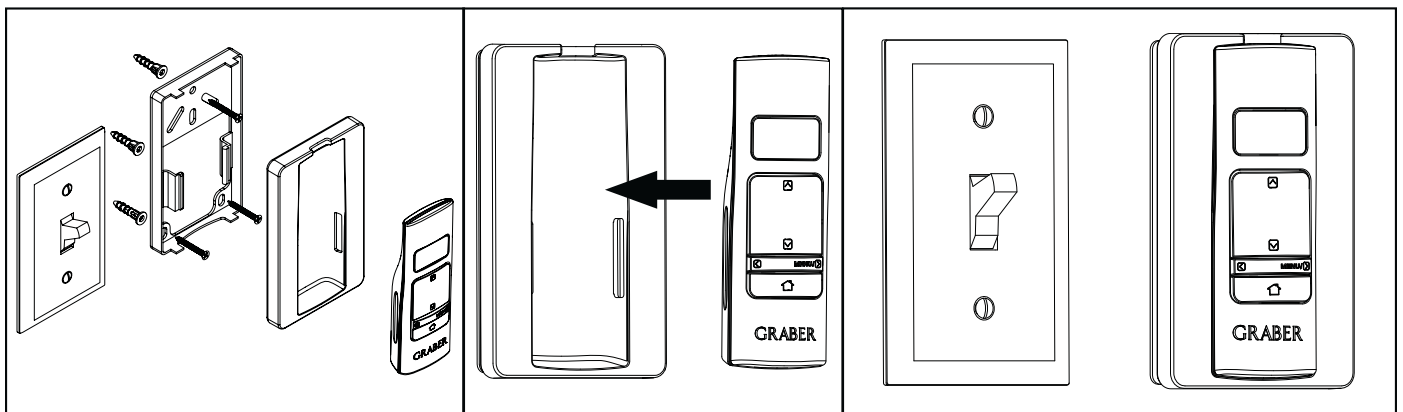


Single-Channel Remote Control (included)



Optional Decorator Wall Plate Mount  
(see Virtual Cord™ options for details)

## Multi-Channel Remote Mounting Options

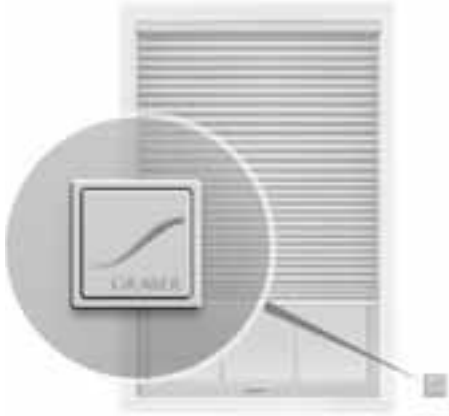


Multi-Channel Remote Control (included)

## Size Considerations

### CrystalPleat® Cellular and Pleated Shades Motorized Lift

Order Entry: 12V Z-Wave Motor without Remote



Refer to individual price list for specific option and size information for the product being ordered.

#### Features

- Simple, intuitive control by means of the unique Virtual Cord™
- Single-channel and multi-channel remotes are also available to control shades individually or in a group
- Shades can be conveniently operated from virtually anywhere in the home, up to 65 feet (19.9 m)
- Consistent motor speed regardless of size or weight
- Efficiently manages energy (heat gain and loss)
- A safer alternative to accessible cords that are traditionally used to operate window coverings; ideal for homes with children and pets
- Clean design with LED operation confirmation
- Push button control on shade end cap provides both a programming function at set-up and shade operation should the control be misplaced
- LED feedback on controls simplify operation and programming
- Quiet, smooth shade operation
- Limit safety protection feature simplifies reprogramming, should it be necessary, while protecting the shade from damage
- Convenient soft-start and soft-end add a touch of class to shade travel
- Low voltage motorization requires no costly electrical hard-wiring
- Powered with batteries, plug-in transformer, or multi-motor power supply
- Motor located on right side within headrail
- Not available with bottom up/top down, top down only, sun up/sun down, Perfect-Vue™, SkyTrack™, specialty shapes, or multiple shades on one headrail
- Not available with hold down brackets or side mounts

#### Control and Power Options

- Multiple control and power options available; see Virtual Cord options for availability

**NOTE:** Motorization components and accessories have a five-year limited warranty, excluding batteries.

Cellular Size Considerations	Minimum Width* inches (cm)	Maximum Width inches (cm)	Minimum Height inches (cm)	Maximum Height inches (cm)
All Fabric Styles Except Cocoon	20 (50.8)	144 (365.8)†	9 (22.9)	144 (365.8)
Cocoon	20 (50.8)	86 (218.5)	9 (22.9)	96 (243.9)

\*For all inside mount applications, 3/8" (1.0 cm) deduction is taken by the manufacturer on overall width.

†Based on fabric width.



Pleated Size Considerations	Minimum Width* inches (cm)	Maximum Width inches (cm)	Minimum Height inches (cm)	Maximum Height inches (cm)
1" (2.6 cm) FashionPleat®	18 (45.8)	144 (365.8)†	9 (22.9)	96 (243.9)
1" (2.6 cm) EvenPleat®	18 (45.8)	120 (304.8)†	6 (15.3)	96 (243.9)
2" (5.1 cm) EvenPleat	20 (50.8)	144 (365.8)†	12 (30.5)	120 (304.8)**

\*For all inside mount applications, 3/8" (1.0 cm) deduction is taken by manufacturer on overall width.

\*\*Height limited to 96" (243.9 cm) with overlap.

†Based on fabric width with overlaps.

# Size Considerations

## Fresco® Roman Shades Motorized Lift

Order Entry: 12V Z-Wave Motor without Remote



**Refer to individual price list for specific option and size information for the product being ordered.**

### Features

- Simple, intuitive control by means of the unique Virtual Cord™ control
- Single-channel and multi-channel remotes are also available to control shades individually or in a group
- Shades can be conveniently operated from virtually anywhere in the home, up to 65 feet (19.9 m)
- Consistent motor speed regardless of size or weight
- Efficiently manages energy (heat gain and loss)
- A safer alternative to accessible cords that are traditionally used to operate window coverings; ideal for homes with children and pets
- Clean design with LED operation confirmation
- Push button control on shade end cap provides both a programming function at set-up and shade operation should the control be misplaced
- LED feedback on controls to simplify operation and programming
- Quiet, smooth shade operation
- Limit safety protection feature, which simplifies reprogramming (should it be necessary) while protecting the shade from damage
- Convenient soft-start and soft-end that add a touch of class to shade travel
- Low voltage motorization; no costly electrical hard-wiring required
- Powered with batteries, plug-in transformer, or multi motor power supply
- Motor located on right side within headrail
- Available with both flat and looped styles
- Available with fabric valances, wood valances, and cornices
- Available with bead and gimp trim on fabric valances
- Not available with bottom up/top down or multiple shades on one headrail
- Not available with hold down brackets or side mount brackets

### Control and Power Options

- Multiple control and power options available; see Virtual Cord options for availability

**NOTE:** Motorization components and accessories have a five-year limited warranty, excluding batteries.

Roman Size Considerations	Minimum Width* inches (cm)	Maximum Width inches (cm)	Minimum Height inches (cm)	Maximum Height inches (cm)
Roman Shades: Classic Flat or Looped	20 (50.8)	76 (193.1) <sup>†</sup>	18 (45.8)	96 (243.9)

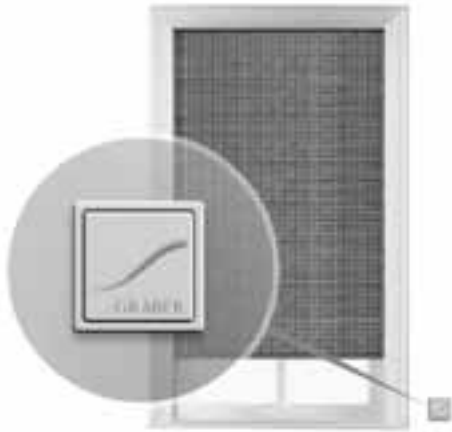
\*For all inside mount applications, 3/8" (1.0 cm) deduction is taken by manufacturer on overall width.

<sup>†</sup>Based on fabric width.

## Size Considerations

### Tradewinds® Natural Shades Motorized Lift

Order Entry: 12V Z-Wave Motor without Remote



Refer to individual price list for specific option and size information for the product being ordered.

#### Features

- Simple, intuitive control by means of the unique Virtual Cord™
- Single-channel and multi-channel remotes are also available to control shades individually or in a group
- Shades can be conveniently operated from virtually anywhere in the home, up to 65 feet (19.9 m)
- Consistent motor speed regardless of size or weight
- Efficiently manages energy (heat gain and loss)
- A safer alternative to accessible cords that are traditionally used to operate window coverings; ideal for homes with children and pets
- Clean design with LED operation confirmation
- Push button control on shade end cap provides both a programming function at set-up and shade operation should the control be misplaced
- LED feedback on controls simplify operation and programming
- Quiet, smooth shade operation
- Limit safety protection feature simplifies reprogramming, should it be necessary, while protecting the shade from damage
- Convenient soft-start and soft-end add a touch of class to shade travel
- Low voltage motorization requires no costly electrical hard-wiring
- Powered with batteries, plug-in transformer, or multi motor power supply
- Available on standard Roman or old style Roman only
- Available with multiple shades on one headrail; each panel will have a motor and power source; there will be a ½" (1.3 cm) gap between the panels
- Available with fabric edge banding, hem options, and liners
- Motor mounted to the underside of hardwood headrail on right side
- Available with 9" (22.9 cm) standard valance, 9" (22.9 cm) premiere valance, or 9" (22.9 cm) deco trim valance
- Available with bottom corner and bottom center cut-outs
- Not available with special shapes
- Not available with hold down brackets

#### Control and Power Options

- Multiple control and power options available; see Virtual Cord options for availability

**NOTE:** Motorization components and accessories have a five-year limited warranty, excluding batteries.

#### Natural Shades Size Considerations

Style	Minimum Width inches (cm)	Maximum Size	
		Shade square inches (cm <sup>2</sup> )	With Liner square inches (cm <sup>2</sup> )
Inan, Lipo, Revelry, Serenity, Toushan II, Yunnan	18 (45.8)	2,755 (17,774.2)	2,333 (15,051.6)
Chencun	18 (45.8)	5,194 (33,509.6)	3,878 (25,019.3)
Amour, Boardwalk, Escape, Majian, Merino, Moniz	18 (45.8)	6,058 (39,083.8)	4,330 (27,935.4)
Beachfront, Madeira, Majuro, Meilin, Paralian	18 (45.8)	6,854 (44,219.3)	4,723 (30,470.9)
Azores, Sattera, Terrestrial, Zishan	18 (45.8)	9,149 (59,025.7)	5,712 (36,851.5)

# Size Considerations

## Artisan Soft Shades Motorized Lift

Order Entry: 12V Z-Wave Motor without Remote



Refer to individual price list for specific option and size information for the product being ordered.

### Features

- Simple, intuitive control by means of the unique Virtual Cord™
- Single-channel and multi-channel remotes are also available to control shades individually or in a group
- Shades can be conveniently operated from virtually anywhere in the home, up to 65 feet (19.9 m)
- Consistent motor speed regardless of size or weight
- Efficiently manages energy (heat gain and loss)
- A safer alternative to accessible cords that are traditionally used to operate window coverings; ideal for homes with children and pets
- Clean design with an LED operation confirmation
- Push button control on shade end cap provides both a programming function at set-up and shade operation should the control be misplaced
- LED feedback on controls simplify operation and programming
- Quiet, smooth shade operation
- Limit safety protection feature simplifies reprogramming, should it be necessary, while protecting the shade from damage
- Convenient soft-start and soft-end add a touch of class to shade travel
- Low voltage motorization requires no costly electrical hard-wiring
- Powered with batteries, plug-in transformer, or multi-motor power supply
- Motor mounted to the underside of hardwood headrail on right side
- Not available with the following:
  - Balloon pleat
  - Blackout liner
  - Multiple shades on one headrail
- Not available with hold down brackets

### Control and Power Options

- Multiple control and power options available; see Virtual Cord options for availability

**NOTE:** Motorization components and accessories have a five-year limited warranty, excluding batteries.

### Soft Shades Size Considerations

Width		Length	
Minimum inches (cm)	Maximum inches (cm)	Minimum inches (cm)	Maximum inches (cm)
24 (61.0)	96 (243.9)	18 (45.8)	120 (304.8)

### Motorized Maximum Shade Area in Square Inches

Shade Group	12 Volt Motorized Lift		
	Standard or Water Repellent square inches (cm <sup>2</sup> )	Thermal square inches (cm <sup>2</sup> )	Flannel-Back square inches (cm <sup>2</sup> )
1	6,800 (43,870.9)	6,010 (38,774.1)	5,300 (34,193.5)
2	5,612 (36,206.4)	4,958 (31,987.0)	4,600 (29,677.4)
3	4,758 (30,696.7)	4,338 (27,987.0)	4,000 (25,806.4)
4	3,894 (25,122.5)	3,812 (24,593.5)	3,400 (21,935.4)
5	3,318 (21,406.4)	3,230 (20,838.7)	2,840 (18,322.5)
6	N/A	N/A	N/A

**NOTE:** Area is ordered width x ordered height in square inches.

**EXAMPLE:** 60" (152.4 cm) wide x 84" (213.4 cm) high = 5,040 square inches (32,516.1 cm<sup>2</sup>).

## Size Considerations

### Mezzanine Layered Shades Motorized Lift

Order Entry: 12V Z-Wave Motor without Remote



Refer to individual price list for specific option and size information for the product being ordered.

#### Features

- Simple, intuitive control by means of the unique Virtual Cord™
- Single-channel and multi-channel remotes are also available to control shades individually or in a group
- Shades can be conveniently operated from virtually anywhere in the home, up to 65 feet (19.9 m)
- Consistent motor speed regardless of size or weight
- Efficiently manages energy (heat gain and loss)
- A safer alternative to accessible cords that are traditionally used to operate window coverings; ideal for homes with children and pets
- Clean design with LED operation confirmation
- Push button control on shade end cap provides both a programming function at set-up and shade operation should the control be misplaced
- LED feedback on controls simplify operation and programming
- Quiet, smooth shade operation
- Limit safety protection feature simplifies reprogramming, should it be necessary, while protecting the shade from damage
- Convenient soft-start and soft-end add a touch of class to shade travel
- Low voltage motorization requires no costly electrical hard-wiring
- Powered with batteries, plug-in transformer, or multi-motor power supply
- Motor located on right or left side; standard on the right
- Fabric-wrapped cassette comes standard and creates a cohesive appearance in the window
- Not available with hold down brackets

#### Control and Power Options

- Multiple control and power options available; see Virtual Cord options for availability

**NOTE:** Motorization components and accessories have a five-year limited warranty, excluding batteries.

### Light Gap

The fabric width is narrower than the finished shade width of the tube and its components. See chart below for light gap.

Motor End		Idle End	
Inside Mount inches (cm)	Outside Mount inches (cm)	Inside Mount inches (cm)	Outside Mount inches (cm)
1 (2.6)	<sup>1</sup> / <sub>16</sub> (2.4)	<sup>11</sup> / <sub>16</sub> (1.8)	<sup>5</sup> / <sub>8</sub> (1.6)

### Layered Shades Size Considerations

Style Name	Maximum Width* inches (cm)	Maximum Height* inches (cm)
Aravalli	96 (243.9)	52 (132.1)
Bernina	96 (243.9)	110 (279.4)
Cordillera	85 (215.9)	75 (190.5)
Crestones	97 (246.4)	84 (213.4)
Culebra	95 (241.3)	110 (279.4)
Glorieta	98 (249.0)	110 (279.4)
Glorieta Sheen	98 (249.0)	110 (279.4)
Herard	97 (246.4)	77 (195.6)
Vanoise	91 (231.2)	95 (241.3)
Venado	85 (215.9)	75 (190.5)

Minimum width: motorized lift 16" (40.7 cm).

Minimum length: 12" (30.5 cm) all control types.

\*If the height is shorter than the maximum, a slightly larger width may be available to order. Maximum width is 102" (259.1 cm).



## Size Considerations

### Overture Sheer Shades Motorized Lift

Order Entry: 12V Z-Wave Motor without Remote



Refer to individual price list for specific option and size information for the product being ordered.

#### Features

- Simple, intuitive control by means of the unique Virtual Cord™
- Single-channel and multi-channel remotes are also available to control shades individually or in a group
- Shades can be conveniently operated from virtually anywhere in the home, up to 65 feet (19.9 m)
- Consistent motor speed regardless of size or weight
- Efficiently manages energy (heat gain and loss)
- A safer alternative to accessible cords that are traditionally used to operate window coverings; ideal for homes with children and pets
- Clean design with LED operation confirmation
- Push button control on shade end cap provides both a programming function at set-up and shade operation should the control be misplaced
- LED feedback on controls simplify operation and programming
- Quiet, smooth shade operation
- Limit safety protection feature simplifies reprogramming, should it be necessary, while protecting the shade from damage
- Convenient soft-start and soft-end add a touch of class to shade travel
- Low voltage motorization requires no costly electrical hard-wiring
- Powered with batteries, plug-in transformer, or multi-motor power supply
- Motor located on right or left side; standard on the right
- Fabric-wrapped cassette comes standard and creates a cohesive appearance in the window
- Not available with hold down brackets

#### Control and Power Options

- Multiple control and power options available; see Virtual Cord options for availability

**NOTE:** Motorization components and accessories have a five-year limited warranty, excluding batteries.

### Light Gap

The fabric width is narrower than the finished shade width of the tube and its components. See chart below for light gap.

Motor End		Idle End	
Inside Mount inches (cm)	Outside Mount inches (cm)	Inside Mount inches (cm)	Outside Mount inches (cm)
1 (2.6)	$\frac{1}{16}$ (2.4)	$\frac{11}{16}$ (1.8)	$\frac{5}{8}$ (1.6)

### Sheer Shades Size Considerations

Style Name	Maximum Width* inches (cm)	Maximum Height* inches (cm)
Glessner 2" (5.1 cm)	96 (243.9)	105 (266.7)
Glessner Sheen 2" (5.1 cm)	98 (249.0)	110 (279.4)
Glessner Woven 2" (5.1 cm)	96 (243.9)	110 (279.4)
Glessner 3" (7.7 cm)	96 (243.9)	105 (266.7)
Glessner Sheen 3" (7.7 cm)	98 (249.0)	110 (279.4)
Glessner Woven 3" (7.7 cm)	96 (243.9)	110 (279.4)
Marisco 2" (5.1 cm)	94 (238.8)	99 (251.5)
Marisco 2 $\frac{3}{4}$ " (7.0 cm)	94 (238.8)	98 (249.0)
San Simeon 3" (7.7 cm)	96 (243.9)	65 (165.1)
Roslin	94 (238.8)	75 (190.5)
Winchester	97 (246.4)	87 (221.0)
Winchester Sheen	102 (259.1)	69 (175.3)
Winchester Woven	97 (246.4)	87 (221.0)

Minimum width: motorized lift 16" (40.7 cm).

Minimum length: 12" (30.5 cm) all control types.

\*If the height is shorter than the maximum, a slightly larger width may be available to order. Maximum width is 102" (259.1 cm).

# Size Considerations

## LightWeaves® Roller and Solar Shades Motorized Lift

Order Entry: 12V Z-Wave Motor without Remote



Inside Mount Light Gap  
Refer to Light Gap Chart

Refer to individual price list for specific option and size information for the product being ordered.

### Features

- Simple, intuitive control by means of the unique Virtual Cord™
- Single-channel and multi-channel remotes are also available to control shades individually or in a group
- Shades can be conveniently operated from virtually anywhere in the home, up to 65 feet (19.9 m)
- Consistent motor speed regardless of size or weight
- Efficiently manages energy (heat gain and loss)
- A safer alternative to accessible cords that are traditionally used to operate window coverings; ideal for homes with children and pets
- Clean design with LED operation confirmation
- Push button control on shade end cap provides both a programming function at set-up and shade operation should the control be misplaced
- LED feedback on controls simplify operation and programming
- Quiet, smooth shade operation
- Limit safety protection feature simplifies reprogramming, should it be necessary, while protecting the shade from damage
- Convenient soft-start and soft-end add a touch of class to shade travel
- Low voltage motorization requires no costly electrical hard-wiring
- Powered with batteries, plug-in transformer, or multi-motor power supply
- Available with standard or reverse roll; cassette, fascia, and contour valance only available with standard roll
- Available with side channels with sealed hem bar only
- Motor located on the left or right side; standard on the right
- Not available with hold down brackets

### Control and Power Options

- Multiple control and power options available; see Virtual Cord options for availability

**NOTE:** Motorization components and accessories have a five-year limited warranty, excluding batteries.

Inside Mount Light Gap	
Control Type	Light Gap per Side inches (cm)
Motorized Lift	½ to ⅜ (1.3 to 2.1)
Motorized Lift with Cassette	⅝ to 1 (1.5 to 2.6)
Dual Motorized Lift	⅝ to ⅞ (1.5 to 2.3)
Dual Motorized Lift with Cassette	⅝ to 1 (1.5 to 2.6)

Size Considerations		
Motor Type	Minimum Width inches (cm)	Minimum Height inches (cm)
12 Volt	16 (40.7)	13 (33.1)

**NOTE:** See size charts on following pages.

# Size Considerations

Minimum width: 16" (40.6 cm)  
Minimum height: 13" (33.0 cm)

## LightWeaves® Roller and Solar Shades: 12 Volt Motor Maximum Shade Size

Valance Type	Normal Fabric Orientation												Fabric Turned Width For Height (railroaded)																								
	Small Cassette				Medium Cassette				Large Cassette/ Contour Valance/ No Cassette/ No Valance				3" (7.7 cm) Fascia			4" (10.2 cm) Fascia			Medium Cassette			Large Cassette/ Contour Valance/ No Cassette/ No Valance			Large Cassette/ Contour Valance/ No Cassette/ No Valance at Max Width			3" (7.7 cm) Fascia			4" (10.2 cm) Fascia						
	Width inches (cm)	Height inches (cm)	Width inches (cm)	Height inches (cm)	Width inches (cm)	Height inches (cm)	Width inches (cm)	Height inches (cm)	Width inches (cm)	Height inches (cm)	Width inches (cm)	Height inches (cm)	Width inches (cm)	Height inches (cm)	Width inches (cm)	Height inches (cm)	Width inches (cm)	Height inches (cm)	Width inches (cm)	Height inches (cm)	Width inches (cm)	Height inches (cm)	Width inches (cm)	Height inches (cm)	Width inches (cm)	Height inches (cm)	Width inches (cm)	Height inches (cm)	Width inches (cm)	Height inches (cm)	Width inches (cm)	Height inches (cm)	Width inches (cm)	Height inches (cm)	Width inches (cm)	Height inches (cm)	
Allure	91 (231.2)	131 (332.8)	91 (231.2)	131 (332.8)	91 (231.2)	131 (332.8)	91 (231.2)	131 (332.8)	91 (231.2)	131 (332.8)	91 (231.2)	131 (332.8)	91 (231.2)	131 (332.8)	95 (241.3)	98 (249.0)	95 (241.3)	98 (249.0)	95 (241.3)	98 (249.0)	95 (241.3)	98 (249.0)	95 (241.3)	98 (249.0)	95 (241.3)	98 (249.0)	95 (241.3)	98 (249.0)	95 (241.3)	98 (249.0)	95 (241.3)	98 (249.0)	95 (241.3)	98 (249.0)	95 (241.3)	98 (249.0)	
Arboretum BO	87 (221.0)	97 (246.4)	82 (208.3)	131 (332.8)	82 (208.3)	131 (332.8)	82 (208.3)	131 (332.8)	82 (208.3)	131 (332.8)	82 (208.3)	131 (332.8)	82 (208.3)	131 (332.8)	75 (190.5)	84 (213.4)	75 (190.5)	84 (213.4)	75 (190.5)	84 (213.4)	75 (190.5)	84 (213.4)	75 (190.5)	84 (213.4)	75 (190.5)	84 (213.4)	75 (190.5)	84 (213.4)	75 (190.5)	84 (213.4)	75 (190.5)	84 (213.4)	75 (190.5)	84 (213.4)	75 (190.5)	84 (213.4)	
Arboretum LF	90 (228.6)	136 (345.5)	90 (228.6)	136 (345.5)	90 (228.6)	136 (345.5)	90 (228.6)	136 (345.5)	90 (228.6)	136 (345.5)	90 (228.6)	136 (345.5)	90 (228.6)	136 (345.5)	82 (208.3)	84 (213.4)	82 (208.3)	84 (213.4)	82 (208.3)	84 (213.4)	82 (208.3)	84 (213.4)	82 (208.3)	84 (213.4)	82 (208.3)	84 (213.4)	82 (208.3)	84 (213.4)	82 (208.3)	84 (213.4)	82 (208.3)	84 (213.4)	82 (208.3)	84 (213.4)	82 (208.3)	84 (213.4)	
Banquet	85 (215.9)	139 (353.1)	85 (215.9)	144 (365.8)	85 (215.9)	144 (365.8)	85 (215.9)	144 (365.8)	85 (215.9)	144 (365.8)	85 (215.9)	144 (365.8)	85 (215.9)	144 (365.8)	96 (243.9)	74 (188.0)	96 (243.9)	74 (188.0)	96 (243.9)	74 (188.0)	96 (243.9)	74 (188.0)	96 (243.9)	74 (188.0)	96 (243.9)	74 (188.0)	96 (243.9)	74 (188.0)	96 (243.9)	74 (188.0)	96 (243.9)	74 (188.0)	96 (243.9)	74 (188.0)	96 (243.9)	74 (188.0)	
Broadcast	71 (180.4)	72 (182.9)	77 (195.6)	111 (282.0)	77 (195.6)	111 (282.0)	77 (195.6)	111 (282.0)	77 (195.6)	111 (282.0)	77 (195.6)	111 (282.0)	77 (195.6)	111 (282.0)	71 (180.4)	72 (182.9)	71 (180.4)	72 (182.9)	71 (180.4)	72 (182.9)	71 (180.4)	72 (182.9)	71 (180.4)	72 (182.9)	71 (180.4)	72 (182.9)	71 (180.4)	72 (182.9)	71 (180.4)	72 (182.9)	71 (180.4)	72 (182.9)	71 (180.4)	72 (182.9)	71 (180.4)	72 (182.9)	
Cambridge LF 76" (193.1 cm) (Ivory)	77 (195.6)	144 (365.8)	77 (195.6)	144 (365.8)	77 (195.6)	144 (365.8)	77 (195.6)	144 (365.8)	77 (195.6)	144 (365.8)	77 (195.6)	144 (365.8)	77 (195.6)	144 (365.8)	86 (218.5)	68 (172.8)	86 (218.5)	68 (172.8)	86 (218.5)	68 (172.8)	86 (218.5)	68 (172.8)	86 (218.5)	68 (172.8)	86 (218.5)	68 (172.8)	86 (218.5)	68 (172.8)	86 (218.5)	68 (172.8)	86 (218.5)	68 (172.8)	86 (218.5)	68 (172.8)	86 (218.5)	68 (172.8)	
Cambridge LF 92" (193.1 cm) (Clay, Cocoa Bean, Inkwell, Misty, Off White, White)	92 (233.7)	139 (353.1)	92 (233.7)	139 (353.1)	92 (233.7)	139 (353.1)	92 (233.7)	139 (353.1)	92 (233.7)	139 (353.1)	92 (233.7)	139 (353.1)	92 (233.7)	139 (353.1)	84 (213.4)	84 (213.4)	84 (213.4)	84 (213.4)	84 (213.4)	84 (213.4)	84 (213.4)	84 (213.4)	84 (213.4)	84 (213.4)	84 (213.4)	84 (213.4)	84 (213.4)	84 (213.4)	84 (213.4)	84 (213.4)	84 (213.4)	84 (213.4)	84 (213.4)	84 (213.4)	84 (213.4)	84 (213.4)	
Cambridge RD 76" (193.1 cm) (Ivory)	77 (195.6)	112 (284.5)	77 (195.6)	144 (365.8)	77 (195.6)	144 (365.8)	77 (195.6)	144 (365.8)	77 (195.6)	144 (365.8)	77 (195.6)	144 (365.8)	77 (195.6)	144 (365.8)	79 (200.7)	68 (172.8)	79 (200.7)	68 (172.8)	79 (200.7)	68 (172.8)	79 (200.7)	68 (172.8)	79 (200.7)	68 (172.8)	79 (200.7)	68 (172.8)	79 (200.7)	68 (172.8)	79 (200.7)	68 (172.8)	79 (200.7)	68 (172.8)	79 (200.7)	68 (172.8)	79 (200.7)	68 (172.8)	
Cambridge RD 92" (193.1 cm) (Clay, Cocoa Bean, Inkwell, Misty, Off White, White)	85 (215.9)	112 (284.5)	82 (208.3)	138 (350.6)	82 (208.3)	138 (350.6)	82 (208.3)	138 (350.6)	82 (208.3)	138 (350.6)	82 (208.3)	138 (350.6)	82 (208.3)	138 (350.6)	76 (193.1)	84 (213.4)	76 (193.1)	84 (213.4)	76 (193.1)	84 (213.4)	76 (193.1)	84 (213.4)	76 (193.1)	84 (213.4)	76 (193.1)	84 (213.4)	76 (193.1)	84 (213.4)	76 (193.1)	84 (213.4)	76 (193.1)	84 (213.4)	76 (193.1)	84 (213.4)	76 (193.1)	84 (213.4)	
Capri	71 (180.4)	104 (264.2)	71 (180.4)	144 (365.8)	71 (180.4)	144 (365.8)	71 (180.4)	144 (365.8)	71 (180.4)	144 (365.8)	71 (180.4)	144 (365.8)	71 (180.4)	144 (365.8)	71 (180.4)	143 (363.3)	71 (180.4)	144 (365.8)	71 (180.4)	144 (365.8)	71 (180.4)	144 (365.8)	71 (180.4)	144 (365.8)	71 (180.4)	144 (365.8)	71 (180.4)	144 (365.8)	71 (180.4)	144 (365.8)	71 (180.4)	144 (365.8)	71 (180.4)	144 (365.8)	71 (180.4)	144 (365.8)	
Chronicles	85 (215.9)	93 (236.3)	80 (203.2)	125 (317.5)	80 (203.2)	125 (317.5)	80 (203.2)	125 (317.5)	80 (203.2)	125 (317.5)	80 (203.2)	125 (317.5)	80 (203.2)	125 (317.5)	80 (203.2)	125 (317.5)	80 (203.2)	125 (317.5)	80 (203.2)	125 (317.5)	80 (203.2)	125 (317.5)	80 (203.2)	125 (317.5)	80 (203.2)	125 (317.5)	80 (203.2)	125 (317.5)	80 (203.2)	125 (317.5)	80 (203.2)	125 (317.5)	80 (203.2)	125 (317.5)	80 (203.2)	125 (317.5)	
Complex	71 (180.4)	83 (210.9)	77 (195.6)	126 (320.1)	77 (195.6)	126 (320.1)	77 (195.6)	126 (320.1)	77 (195.6)	126 (320.1)	77 (195.6)	126 (320.1)	77 (195.6)	126 (320.1)	81 (205.8)	100 (254.0)	81 (205.8)	100 (254.0)	81 (205.8)	100 (254.0)	81 (205.8)	100 (254.0)	81 (205.8)	100 (254.0)	81 (205.8)	100 (254.0)	81 (205.8)	100 (254.0)	81 (205.8)	100 (254.0)	81 (205.8)	100 (254.0)	81 (205.8)	100 (254.0)	81 (205.8)	100 (254.0)	
Crossweave	72 (182.9)	118 (299.8)	72 (182.9)	144 (365.8)	72 (182.9)	144 (365.8)	72 (182.9)	144 (365.8)	72 (182.9)	144 (365.8)	72 (182.9)	144 (365.8)	72 (182.9)	144 (365.8)	99 (251.5)	62 (157.5)	99 (251.5)	62 (157.5)	99 (251.5)	62 (157.5)	99 (251.5)	62 (157.5)	99 (251.5)	62 (157.5)	99 (251.5)	62 (157.5)	99 (251.5)	62 (157.5)	99 (251.5)	62 (157.5)	99 (251.5)	62 (157.5)	99 (251.5)	62 (157.5)	99 (251.5)	62 (157.5)	
Crystalline	77 (195.6)	144 (365.8)	77 (195.6)	144 (365.8)	77 (195.6)	144 (365.8)	77 (195.6)	144 (365.8)	77 (195.6)	144 (365.8)	77 (195.6)	144 (365.8)	77 (195.6)	144 (365.8)	85 (215.9)	68 (172.8)	85 (215.9)	68 (172.8)	85 (215.9)	68 (172.8)	85 (215.9)	68 (172.8)	85 (215.9)	68 (172.8)	85 (215.9)	68 (172.8)	85 (215.9)	68 (172.8)	85 (215.9)	68 (172.8)	85 (215.9)	68 (172.8)	85 (215.9)	68 (172.8)	85 (215.9)	68 (172.8)	
Cumulus	73 (185.5)	84 (213.4)	80 (203.2)	122 (309.9)	80 (203.2)	122 (309.9)	80 (203.2)	122 (309.9)	80 (203.2)	122 (309.9)	80 (203.2)	122 (309.9)	80 (203.2)	122 (309.9)	100 (254.0)	80 (203.2)	100 (254.0)	80 (203.2)	122 (309.9)	100 (254.0)	80 (203.2)	122 (309.9)	100 (254.0)	80 (203.2)	122 (309.9)	100 (254.0)	80 (203.2)	122 (309.9)	100 (254.0)	80 (203.2)	122 (309.9)	100 (254.0)	80 (203.2)	122 (309.9)	100 (254.0)	80 (203.2)	122 (309.9)
Elements	80 (203.2)	101 (256.6)	91 (231.2)	133 (337.9)	91 (231.2)	133 (337.9)	91 (231.2)	133 (337.9)	91 (231.2)	133 (337.9)	91 (231.2)	133 (337.9)	91 (231.2)	133 (337.9)	84 (213.4)	84 (213.4)	84 (213.4)	84 (213.4)	84 (213.4)	84 (213.4)	84 (213.4)	84 (213.4)	84 (213.4)	84 (213.4)	84 (213.4)	84 (213.4)	84 (213.4)	84 (213.4)	84 (213.4)	84 (213.4)	84 (213.4)	84 (213.4)	84 (213.4)	84 (213.4)	84 (213.4)	84 (213.4)	
Empire	92 (233.7)	139 (353.1)	92 (233.7)	144 (365.8)	92 (233.7)	144 (365.8)	92 (233.7)	144 (365.8)	92 (233.7)	144 (365.8)	92 (233.7)	144 (365.8)	92 (233.7)	144 (365.8)	83 (210.9)	119 (302.3)	83 (210.9)	119 (302.3)	83 (210.9)	119 (302.3)	83 (210.9)	119 (302.3)	83 (210.9)	119 (302.3)	83 (210.9)	119 (302.3)	83 (210.9)	119 (302.3)	83 (210.9)	119 (302.3)	83 (210.9)	119 (302.3)	83 (210.9)	119 (302.3)	83 (210.9)	119 (302.3)	83 (210.9)
Epitome	56 (142.3)	60 (152.4)	61 (155.0)	92 (233.7)	59 (149.9)	108 (274.4)	52 (132.7)	83 (210.9)	59 (149.9)	108 (274.4)	52 (132.7)	83 (210.9)	59 (149.9)	108 (274.4)	80 (203.2)	124 (315.0)	80 (203.2)	124 (315.0)	80 (203.2)	124 (315.0)	80 (203.2)	124 (315.0)	80 (203.2)	124 (315.0)	80 (203.2)	124 (315.0)	80 (203.2)	124 (315.0)	80 (203.2)	124 (315.0)	80 (203.2)	124 (315.0)	80 (203.2)	124 (315.0)	80 (203.2)	124 (315.0)	
Essential	70 (177.8)	144 (365.8)	70 (177.8)	144 (365.8)	70 (177.8)	144 (365.8)	70 (177.8)	144 (365.8)	70 (177.8)	144 (365.8)	70 (177.8)	144 (365.8)	70 (177.8)	144 (365.8)	79 (200.7)	66 (167.7)	79 (200.7)	66 (167.7)	79 (200.7)	66 (167.7)	79 (200.7)	66 (167.7)	79 (200.7)	66 (167.7)	79 (200.7)	66 (167.7)	79 (200.7)	66 (167.7)	79 (200.7)	66 (167.7)	79 (200.7)	66 (167.7)	79 (200.7)	66 (167.7)	79 (200.7)		
Exposition	75 (190.5)	66 (167.7)	82 (208.3)	102 (259.1)	79 (200.7)	124 (315.0)	71 (180.4)	92 (233.7)	71 (180.4)	92 (233.7)	71 (180.4)	92 (233.7)	71 (180.4)	92 (233.7)	115 (292.1)	77 (195.6)	115 (292.1)	77 (195.6)	115 (292.1)	77 (195.6)	115 (292.1)	77 (195.6)	115 (292.1)	77 (195.6)	115 (292.1)	77 (195.6)	115 (292.1)	77 (195.6)	115 (292.1)	77 (195.6)	115 (292.1)	77 (195.6)	115 (292.1)	77 (195.6)	115 (292.1)	77 (195.6)	115 (292.1)
Guildhall	68 (172.8)	97 (246.4)	77 (195.6)	123 (312.5)	77 (195.6)	123 (312.5)	77 (195.6)	123 (312.5)	77 (195.6)	123 (312.5)	77 (195.6)	123 (312.5)	77 (195.6)	123 (312.5)	133 (337.9)	91 (231.2)	133 (337.9)	91 (231.2)	133 (337.9)	91 (231.2)	133 (337.9)	91 (231.2)	133 (337.9)	91 (231.2)	133 (337.9)	91 (231.2)	133 (337.9)	91 (231.2)	133 (337.9)	91 (231.2)	133 (337.9)	91 (231.2)	133 (337.9)	91 (231.2)	133 (337.9)	91 (231.2)	133 (337.9)
Harmony	92 (233.7)	124 (315.0)	91 (231.2)																																		

# Size Considerations

Minimum width: 16" (40.6 cm)  
Minimum height: 13" (33.0 cm)

## LightWeaves® Roller and Solar Shades: 12 Volt Motor Maximum Shade Size

Valance Type	Normal Fabric Orientation										Fabric Turned Width For Height (railroaded)									
	Small Cassette		Medium Cassette		Large Cassette/Contour Valance/No Valance		3" (7.7 cm) Fascia		4" (10.2 cm) Fascia		Small Cassette		Medium Cassette		Large Cassette/Contour Valance/No Valance		3" (7.7 cm) Fascia		4" (10.2 cm) Fascia	
	Width inches (cm)	Height inches (cm)	Width inches (cm)	Height inches (cm)	Width inches (cm)	Height inches (cm)	Width inches (cm)	Height inches (cm)	Width inches (cm)	Height inches (cm)	Width inches (cm)	Height inches (cm)	Width inches (cm)	Height inches (cm)	Width inches (cm)	Height inches (cm)	Width inches (cm)	Height inches (cm)	Width inches (cm)	Height inches (cm)
Fabric	71 (180.4)	84 (213.4)	78 (198.2)	124 (315.0)	78 (198.2)	124 (315.0)	81 (205.8)	100 (254.0)	78 (198.2)	124 (315.0)	82 (208.3)	89 (226.1)	77 (195.6)	125 (317.5)	77 (195.6)	125 (317.5)	77 (195.6)	125 (317.5)	77 (195.6)	125 (317.5)
Kismet	75 (190.5)	93 (236.3)	73 (185.5)	108 (274.4)	73 (185.5)	108 (274.4)	73 (185.5)	108 (274.4)	73 (185.5)	108 (274.4)	73 (185.5)	108 (274.4)	73 (185.5)	108 (274.4)	73 (185.5)	108 (274.4)	73 (185.5)	108 (274.4)	73 (185.5)	108 (274.4)
Merrit	77 (195.6)	144 (365.8)	77 (195.6)	144 (365.8)	77 (195.6)	144 (365.8)	83 (210.9)	100 (254.0)	77 (195.6)	144 (365.8)	83 (210.9)	100 (254.0)	77 (195.6)	144 (365.8)	83 (210.9)	100 (254.0)	77 (195.6)	144 (365.8)	83 (210.9)	100 (254.0)
Monaco	71 (180.4)	70 (177.8)	77 (195.6)	107 (271.8)	75 (190.5)	125 (317.5)	82 (208.3)	100 (254.0)	75 (190.5)	125 (317.5)	82 (208.3)	100 (254.0)	75 (190.5)	125 (317.5)	82 (208.3)	100 (254.0)	75 (190.5)	125 (317.5)	82 (208.3)	100 (254.0)
Monticello	88 (223.6)	133 (337.9)	88 (223.6)	133 (337.9)	88 (223.6)	133 (337.9)	88 (223.6)	133 (337.9)	88 (223.6)	133 (337.9)	88 (223.6)	133 (337.9)	88 (223.6)	133 (337.9)	88 (223.6)	133 (337.9)	88 (223.6)	133 (337.9)	88 (223.6)	133 (337.9)
Opulent	76 (193.1)	118 (299.8)	88 (223.6)	132 (335.3)	88 (223.6)	132 (335.3)	88 (223.6)	132 (335.3)	88 (223.6)	132 (335.3)	88 (223.6)	132 (335.3)	88 (223.6)	132 (335.3)	88 (223.6)	132 (335.3)	88 (223.6)	132 (335.3)	88 (223.6)	132 (335.3)
Paisades	75 (190.5)	79 (200.7)	82 (208.3)	121 (307.4)	82 (208.3)	121 (307.4)	82 (208.3)	121 (307.4)	82 (208.3)	121 (307.4)	82 (208.3)	121 (307.4)	82 (208.3)	121 (307.4)	82 (208.3)	121 (307.4)	82 (208.3)	121 (307.4)	82 (208.3)	121 (307.4)
Paradigm	68 (172.8)	72 (182.9)	74 (188.0)	109 (276.9)	74 (188.0)	109 (276.9)	78 (198.2)	86 (218.5)	74 (188.0)	109 (276.9)	78 (198.2)	86 (218.5)	74 (188.0)	109 (276.9)	78 (198.2)	86 (218.5)	74 (188.0)	109 (276.9)	78 (198.2)	86 (218.5)
Plexus 1%	69 (175.3)	84 (213.4)	75 (190.5)	112 (284.5)	75 (190.5)	112 (284.5)	78 (198.2)	91 (231.2)	75 (190.5)	112 (284.5)	78 (198.2)	91 (231.2)	75 (190.5)	112 (284.5)	78 (198.2)	91 (231.2)	75 (190.5)	112 (284.5)	78 (198.2)	91 (231.2)
Plexus 3%	68 (172.8)	84 (213.4)	75 (190.5)	122 (309.9)	75 (190.5)	122 (309.9)	78 (198.2)	100 (254.0)	75 (190.5)	122 (309.9)	78 (198.2)	100 (254.0)	75 (190.5)	122 (309.9)	78 (198.2)	100 (254.0)	75 (190.5)	122 (309.9)	78 (198.2)	100 (254.0)
Plexus 5%	90 (228.6)	123 (312.5)	89 (226.1)	132 (335.3)	89 (226.1)	132 (335.3)	89 (226.1)	132 (335.3)	89 (226.1)	132 (335.3)	89 (226.1)	132 (335.3)	89 (226.1)	132 (335.3)	89 (226.1)	132 (335.3)	89 (226.1)	132 (335.3)	89 (226.1)	132 (335.3)
Prairie	56 (142.3)	72 (182.9)	61 (155.0)	111 (282.0)	60 (152.4)	122 (309.9)	64 (162.6)	86 (218.5)	60 (152.4)	122 (309.9)	64 (162.6)	86 (218.5)	60 (152.4)	122 (309.9)	64 (162.6)	86 (218.5)	60 (152.4)	122 (309.9)	64 (162.6)	86 (218.5)
Prodigy	85 (215.9)	93 (236.3)	80 (203.2)	125 (317.5)	80 (203.2)	125 (317.5)	80 (203.2)	125 (317.5)	80 (203.2)	125 (317.5)	80 (203.2)	125 (317.5)	80 (203.2)	125 (317.5)	80 (203.2)	125 (317.5)	80 (203.2)	125 (317.5)	80 (203.2)	125 (317.5)
Reaction	71 (180.4)	100 (254.0)	80 (203.2)	127 (322.6)	80 (203.2)	127 (322.6)	81 (205.8)	119 (302.3)	80 (203.2)	127 (322.6)	81 (205.8)	119 (302.3)	80 (203.2)	127 (322.6)	81 (205.8)	119 (302.3)	80 (203.2)	127 (322.6)	81 (205.8)	119 (302.3)
Resolve	72 (182.9)	77 (195.6)	72 (182.9)	117 (297.2)	72 (182.9)	117 (297.2)	72 (182.9)	117 (297.2)	72 (182.9)	117 (297.2)	72 (182.9)	117 (297.2)	72 (182.9)	117 (297.2)	72 (182.9)	117 (297.2)	72 (182.9)	117 (297.2)	72 (182.9)	117 (297.2)
Riverbend	72 (182.9)	32 (81.3)	72 (182.9)	59 (149.9)	72 (182.9)	59 (149.9)	72 (182.9)	59 (149.9)	72 (182.9)	59 (149.9)	72 (182.9)	59 (149.9)	72 (182.9)	59 (149.9)	72 (182.9)	59 (149.9)	72 (182.9)	59 (149.9)	72 (182.9)	59 (149.9)
Rujin	72 (182.9)	109 (276.9)	72 (182.9)	144 (365.8)	72 (182.9)	144 (365.8)	72 (182.9)	144 (365.8)	72 (182.9)	144 (365.8)	72 (182.9)	144 (365.8)	72 (182.9)	144 (365.8)	72 (182.9)	144 (365.8)	72 (182.9)	144 (365.8)	72 (182.9)	144 (365.8)
Sedona	84 (213.4)	97 (246.4)	80 (203.2)	123 (312.5)	80 (203.2)	123 (312.5)	80 (203.2)	123 (312.5)	80 (203.2)	123 (312.5)	80 (203.2)	123 (312.5)	80 (203.2)	123 (312.5)	80 (203.2)	123 (312.5)	80 (203.2)	123 (312.5)	80 (203.2)	123 (312.5)
Shadow	80 (203.2)	118 (299.8)	95 (241.3)	118 (299.8)	95 (241.3)	118 (299.8)	95 (241.3)	118 (299.8)	95 (241.3)	118 (299.8)	95 (241.3)	118 (299.8)	95 (241.3)	118 (299.8)	95 (241.3)	118 (299.8)	95 (241.3)	118 (299.8)	95 (241.3)	118 (299.8)
Sheffield	82 (208.3)	89 (226.1)	77 (195.6)	125 (317.5)	77 (195.6)	125 (317.5)	77 (195.6)	125 (317.5)	77 (195.6)	125 (317.5)	77 (195.6)	125 (317.5)	77 (195.6)	125 (317.5)	77 (195.6)	125 (317.5)	77 (195.6)	125 (317.5)	77 (195.6)	125 (317.5)
Standard Weave 1%	83 (210.9)	89 (226.1)	78 (198.2)	124 (315.0)	78 (198.2)	124 (315.0)	78 (198.2)	124 (315.0)	78 (198.2)	124 (315.0)	78 (198.2)	124 (315.0)	78 (198.2)	124 (315.0)	78 (198.2)	124 (315.0)	78 (198.2)	124 (315.0)	78 (198.2)	124 (315.0)
Standard Weave 3%	83 (210.9)	97 (246.4)	79 (200.7)	124 (315.0)	79 (200.7)	124 (315.0)	79 (200.7)	124 (315.0)	79 (200.7)	124 (315.0)	79 (200.7)	124 (315.0)	79 (200.7)	124 (315.0)	79 (200.7)	124 (315.0)	79 (200.7)	124 (315.0)	79 (200.7)	124 (315.0)
Standard Weave 5%	84 (213.4)	101 (256.6)	81 (205.8)	120 (304.8)	81 (205.8)	120 (304.8)	81 (205.8)	120 (304.8)	81 (205.8)	120 (304.8)	81 (205.8)	120 (304.8)	81 (205.8)	120 (304.8)	81 (205.8)	120 (304.8)	81 (205.8)	120 (304.8)	81 (205.8)	120 (304.8)
Standard Weave 10%	72 (182.9)	144 (365.8)	72 (182.9)	144 (365.8)	72 (182.9)	144 (365.8)	72 (182.9)	144 (365.8)	72 (182.9)	144 (365.8)	72 (182.9)	144 (365.8)	72 (182.9)	144 (365.8)	72 (182.9)	144 (365.8)	72 (182.9)	144 (365.8)	72 (182.9)	144 (365.8)
Suburban II	82 (208.3)	89 (226.1)	77 (195.6)	125 (317.5)	77 (195.6)	125 (317.5)	77 (195.6)	125 (317.5)	77 (195.6)	125 (317.5)	77 (195.6)	125 (317.5)	77 (195.6)	125 (317.5)	77 (195.6)	125 (317.5)	77 (195.6)	125 (317.5)	77 (195.6)	125 (317.5)
Vanguard 1%	83 (210.9)	89 (226.1)	78 (198.2)	124 (315.0)	78 (198.2)	124 (315.0)	78 (198.2)	124 (315.0)	78 (198.2)	124 (315.0)	78 (198.2)	124 (315.0)	78 (198.2)	124 (315.0)	78 (198.2)	124 (315.0)	78 (198.2)	124 (315.0)	78 (198.2)	124 (315.0)
Vanguard 3%	83 (210.9)	97 (246.4)	79 (200.7)	124 (315.0)	79 (200.7)	124 (315.0)	79 (200.7)	124 (315.0)	79 (200.7)	124 (315.0)	79 (200.7)	124 (315.0)	79 (200.7)	124 (315.0)	79 (200.7)	124 (315.0)	79 (200.7)	124 (315.0)	79 (200.7)	124 (315.0)
Vanguard 5%	62 (157.5)	88 (223.6)	71 (180.4)	104 (264.2)	71 (180.4)	104 (264.2)	71 (180.4)	104 (264.2)	71 (180.4)	104 (264.2)	71 (180.4)	104 (264.2)	71 (180.4)	104 (264.2)	71 (180.4)	104 (264.2)	71 (180.4)	104 (264.2)	71 (180.4)	104 (264.2)
Venture	90 (228.6)	118 (299.8)	89 (226.1)	132 (335.3)	89 (226.1)	132 (335.3)	89 (226.1)	132 (335.3)	89 (226.1)	132 (335.3)	89 (226.1)	132 (335.3)	89 (226.1)	132 (335.3)	89 (226.1)	132 (335.3)	89 (226.1)	132 (335.3)	89 (226.1)	132 (335.3)
Whitcomb	87 (221.0)	106 (269.3)	82 (208.3)	144 (365.8)	82 (208.3)	144 (365.8)	82 (208.3)	144 (365.8)	82 (208.3)	144 (365.8)	82 (208.3)	144 (365.8)	82 (208.3)	144 (365.8)	82 (208.3)	144 (365.8)	82 (208.3)	144 (365.8)	82 (208.3)	144 (365.8)
Whitehall																				

**NOTE:** See dual shade section for motorization information.

Seams may be added to fabrics to accommodate long shade requirements. Seams will be placed as close to the tube as possible; seam location is not selectable. Seams are visible when the shade is fully extended.

## Size Considerations

This table provides the maximum shade size available by fabric, control type, and valance Only the large cassette valance is available for the dual shade. style. Fabric turned width for height (railroaded) may curl along its edge. This is not a defect Small and medium cassette valances are not available. in the product.

### LightWeaves® Roller and Solar Shades: Dual Shades Maximum Shade Size

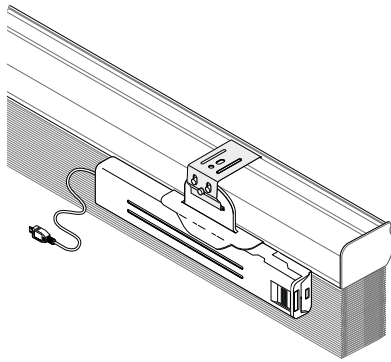
Valance Type	Normal Fabric Orientation						Fabric Turned Width For Height (railroaded)								
	12 Volt Motor No Cassette/ No Valance			12 Volt Motor Large Cassette			12 Volt Motor No Cassette/ No Valance			12 Volt Motor Large Cassette at Max Length			12 Volt Motor Large Cassette at Max Width		
	Width inches (cm)	Height inches (cm)	Height (cm)	Width inches (cm)	Height inches (cm)	Height (cm)	Width inches (cm)	Height inches (cm)	Height (cm)	Width inches (cm)	Height inches (cm)	Height (cm)	Width inches (cm)	Height inches (cm)	Height (cm)
Allure	91 (231.2)	131 (332.8)	131 (332.8)	91 (231.2)	98 (249.0)	98 (249.0)	95 (241.3)	98 (249.0)	98 (249.0)	95 (241.3)	98 (249.0)	98 (249.0)	95 (241.3)	98 (249.0)	98 (249.0)
Arboretum BO	72 (182.9)	108 (274.4)	101 (256.6)	73 (185.5)	84 (213.4)	82 (208.3)	75 (190.5)	84 (213.4)	82 (208.3)	75 (190.5)	84 (213.4)	82 (208.3)	75 (190.5)	84 (213.4)	82 (208.3)
Arboretum LF	91 (231.2)	127 (322.6)	119 (302.3)	92 (233.7)	84 (213.4)	82 (208.3)	82 (208.3)	84 (213.4)	82 (208.3)	82 (208.3)	84 (213.4)	82 (208.3)	82 (208.3)	84 (213.4)	82 (208.3)
Banquet	85 (215.9)	134 (340.4)	119 (302.3)	85 (215.9)	74 (188.0)	74 (188.0)	96 (243.9)	74 (188.0)	74 (188.0)	96 (243.9)	74 (188.0)	74 (188.0)	96 (243.9)	74 (188.0)	74 (188.0)
Broadcast	71 (180.4)	70 (177.8)	63 (160.1)	73 (185.5)	70 (177.8)	56 (142.3)	71 (180.4)	70 (177.8)	56 (142.3)	73 (185.5)	63 (160.1)	63 (160.1)	90 (228.6)	49 (124.5)	
Cambridge LF 76" (193.1 cm) (Ivory)	77 (195.6)	144 (365.8)	144 (365.8)	77 (195.6)	68 (172.8)	66 (167.7)	86 (218.5)	68 (172.8)	66 (167.7)	101 (256.6)	68 (172.8)	66 (167.7)	101 (256.6)	66 (167.7)	
Cambridge LF 92" (193.1 cm) (Clay, Cocoa Bean, Inkwell, Misty, Off White, White)	92 (233.7)	139 (353.1)	126 (320.1)	92 (233.7)	84 (213.4)	82 (208.3)	84 (213.4)	84 (213.4)	82 (208.3)	98 (249.0)	84 (213.4)	84 (213.4)	98 (249.0)	82 (208.3)	
Cambridge RD 76" (193.1 cm) (Ivory)	77 (195.6)	107 (271.8)	114 (289.6)	72 (182.9)	68 (172.8)	66 (167.7)	79 (200.7)	68 (172.8)	66 (167.7)	93 (236.3)	79 (200.7)	68 (172.8)	93 (236.3)	66 (167.7)	
Cambridge RD 92" (193.1 cm) (Clay, Cocoa Bean, Inkwell, Misty, Off White, White)	86 (218.5)	107 (271.8)	114 (289.6)	72 (182.9)	84 (213.4)	82 (208.3)	76 (193.1)	84 (213.4)	82 (208.3)	90 (228.6)	76 (193.1)	84 (213.4)	90 (228.6)	82 (208.3)	
Capri	71 (180.4)	101 (256.6)	91 (231.2)	71 (180.4)	91 (231.2)	91 (231.2)	71 (180.4)	91 (231.2)	91 (231.2)	Not available	Not available	Not available	Not available	Not available	
Chronicles	85 (215.9)	89 (226.1)	98 (249.0)	71 (180.4)	98 (249.0)	98 (249.0)	71 (180.4)	98 (249.0)	98 (249.0)	Not available	Not available	Not available	Not available	Not available	
Complex	71 (180.4)	82 (208.3)	74 (188.0)	72 (182.9)	74 (188.0)	74 (188.0)	72 (182.9)	74 (188.0)	74 (188.0)	Not available	Not available	Not available	Not available	Not available	
Crossweave	72 (182.9)	115 (292.1)	104 (264.2)	72 (182.9)	104 (264.2)	104 (264.2)	72 (182.9)	104 (264.2)	104 (264.2)	99 (251.5)	62 (157.5)	62 (157.5)	99 (251.5)	62 (157.5)	
Crystalline	77 (195.6)	142 (360.7)	135 (342.9)	77 (195.6)	135 (342.9)	135 (342.9)	77 (195.6)	135 (342.9)	135 (342.9)	99 (251.5)	66 (167.7)	68 (172.8)	99 (251.5)	66 (167.7)	
Cumulus	73 (185.5)	82 (208.3)	74 (188.0)	74 (188.0)	74 (188.0)	74 (188.0)	74 (188.0)	74 (188.0)	74 (188.0)	Not available	Not available	Not available	Not available	Not available	
Elements	81 (205.8)	97 (246.4)	88 (223.6)	82 (208.3)	88 (223.6)	88 (223.6)	82 (208.3)	88 (223.6)	88 (223.6)	Not available	Not available	Not available	Not available	Not available	
Empire	92 (233.7)	134 (340.4)	119 (302.3)	92 (233.7)	119 (302.3)	119 (302.3)	92 (233.7)	119 (302.3)	119 (302.3)	84 (213.4)	84 (213.4)	84 (213.4)	84 (213.4)	82 (208.3)	
Epitome	56 (142.3)	58 (147.4)	52 (132.1)	58 (147.4)	52 (132.1)	52 (132.1)	56 (142.3)	58 (147.4)	52 (132.1)	Not available	Not available	Not available	Not available	Not available	
Essential	70 (177.8)	144 (365.8)	144 (365.8)	70 (177.8)	144 (365.8)	144 (365.8)	70 (177.8)	144 (365.8)	144 (365.8)	80 (203.2)	124 (315.0)	124 (315.0)	80 (203.2)	124 (315.0)	
Exposition	76 (193.1)	64 (162.6)	58 (147.4)	77 (195.6)	58 (147.4)	58 (147.4)	76 (193.1)	64 (162.6)	58 (147.4)	Not available	Not available	Not available	Not available	Not available	
Guilhall	70 (177.8)	87 (221.0)	85 (215.9)	70 (177.8)	85 (215.9)	85 (215.9)	70 (177.8)	87 (221.0)	85 (215.9)	Not available	Not available	Not available	Not available	Not available	
Harmony	92 (233.7)	124 (315.0)	112 (284.5)	92 (233.7)	112 (284.5)	112 (284.5)	92 (233.7)	112 (284.5)	112 (284.5)	Not available	Not available	Not available	Not available	Not available	
Herald	92 (233.7)	134 (340.4)	119 (302.3)	92 (233.7)	119 (302.3)	119 (302.3)	92 (233.7)	119 (302.3)	119 (302.3)	84 (213.4)	84 (213.4)	84 (213.4)	84 (213.4)	82 (208.3)	

Seams may be added to fabrics to accommodate long shade requirements. Seams will be placed as close to the tube as possible; seam location is not selectable. Seams are visible when the shade is fully extended.

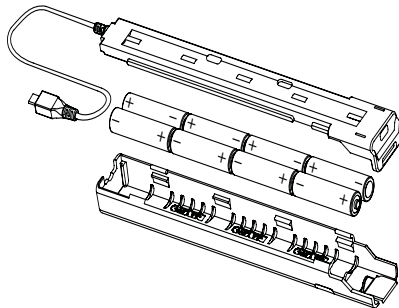


# Options

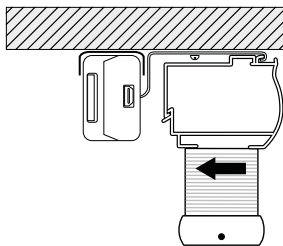
## Virtual Cord™ Power Considerations



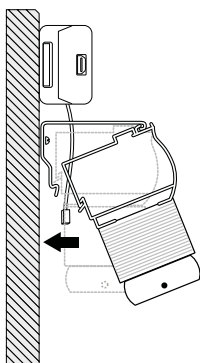
Cellular and Pleated  
Battery Consideration



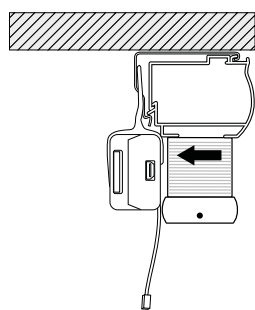
Battery Case



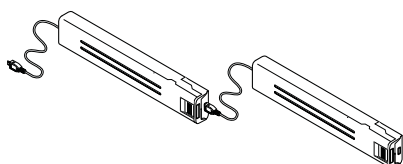
Ceiling/Inside Mount



Outside Mount



Inside Mount



Dual Battery Cases

Motors can be powered by batteries, plug-in transformer, or multi-motor power supply. Each shade requires a motor and appropriate power source.

### Power Considerations

Larger shades consume more power while operating. When choosing the appropriate power source based upon the shade size we recommend the following power sources for the best performance.

Shade Size square inches (cm <sup>2</sup> )	Recommended Power Source
0 to 3,600 (0 to 23,225.8)	Batteries (single or dual), plug-in, or multi-motor power supply
3,600 to 7,200 (23,225.8 to 46,451.5)	Dual battery cases, plug-in, or multi-motor power supply
7,200 (46,451.5)	Plug-in or multi-motor power supply only

Dual battery cases are recommended for larger shades (over 3,600 square inches (23,225.8 cm<sup>2</sup>) to extend battery life.

Transformer power is recommended for larger shades (over 7,200 square inches (46,451.5 cm<sup>2</sup>) to provide the best experience with regular shade operation.

### Battery Case Considerations

**Battery power recommended for maximum of 10 shades for best battery performance.**

Battery cases are installed in space outside of the product and can be a challenge to hide in some windows.

#### For Inside Mounts

- The cleanest and simplest method available for cellular and pleated shades is the integrated battery case hanger; this hanger attaches directly to a shade bracket to support the battery case while allowing the case to be removed for battery changes; additional recessed space will be needed

#### For Outside Mounts

- For outside mounts, battery cases can be installed above or to the side of the shade

**NOTE:** For best performance, use only AA lithium batteries.

Battery case dimensions:

9¼" (23.5 cm) x  
1¼" (3.2 cm) x 7⁄8" (2.3 cm)

Dual battery cases installed end-to-end: require 21" (53.4 cm) of space (including connectors)

Battery case minimum recessed space (installed with bracket):

product minimum recessed space  
+ ¾" (2.0 cm)

# Options

## Virtual Cord™ Power Considerations

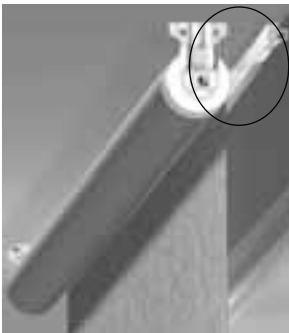
### Solar/Roller, Natural Shades, Soft, Layered, and Sheer Shade Battery Considerations



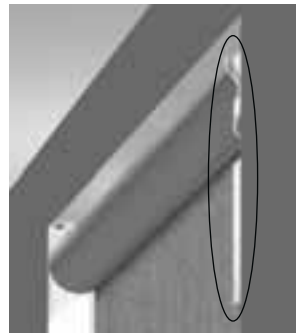
Soft/Natural Shades  
Battery Case  
Mounted Behind



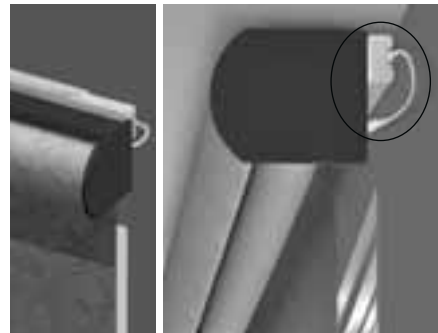
Soft/Natural Shades  
Battery Case  
Mounted on Headrail



Solar Shades  
Outside Mount  
Battery Pack



Solar Shades  
Inside Mount Battery Pack



Solar, Layered, and  
Sheer Shades with Cassette  
Battery Pack

**Transformer power recommended for shade systems of any quantity.**

### DC Plug-in Transformer Considerations

**A power outlet must be within cord length to power motor.**

Transformer includes 72" (182.9 cm) power cord and a 96" (243.9 cm) extension cable (power cord and extension cord cannot be cut to length or trimmed).

**A transformer is recommended on all shades over 7,200 square inches (46,451.5 cm<sup>2</sup>).**

Transformer dimensions

4" (10.2 cm) wide x 2" (5.1 cm) deep (not including plug) x 1½" (3.9 cm) tall (as you look at the plug in the outlet).

**NOTE:** Due to the many variations of installations, wire management components are not included with your motorized shade system. There are numerous wire management products available at your local hardware store or home improvement center to help disguise the power cord when using a plug-in transformer. An example of a popular wire management accessory is wire channel. Wire channel is a vinyl sheathing that can be placed along the window casing or wall that will house and conceal exposed wiring for a clean and professional appearance.

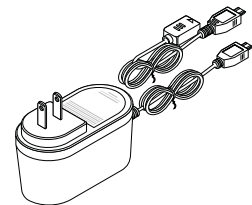
### Multi-Motor Power Supply Considerations

Transformer enclosure is generally mounted in an accessible indoor location such as a basement, utility closet, or garage. Motors are "home run" wired to the panel using 16 gauge wire.

**12 Volt:** 10-motor power supply available for all Graber® products and includes connectors.

**Dimensions:** 12" (30.5 cm) wide x 6" (15.3 cm) deep x 12" (30.5 cm) high.

**CAUTION:** A licensed electrician is required for all line voltage electrical connections. All local and NEC codes must be followed.



DC Plug-In Transformer



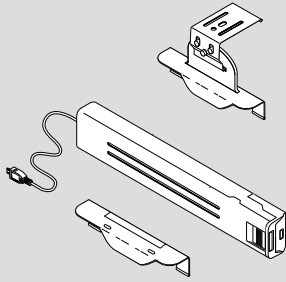
Multi-Motor Power Supply



# Options

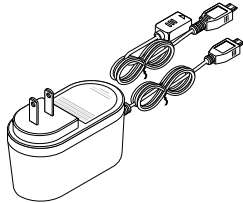
## Virtual Cord™ Power Components

**NOTE:** These power supplies are not compatible with Somfy® RTS motors.



### Battery Case

- Reloadable: available with or without batteries
- Multiple mounting options provided
- Simple case design allows for easy battery replacement
- Recommend shades greater than 3,600 square inches (23,225.8 cm<sup>2</sup>) utilize two single battery cases (dual cases) to extend battery life
- For shades exceeding 7,200 square inches (46,451.5 cm<sup>2</sup>) we recommend a plug-in transformer
- For best performance, use only AA lithium batteries (each case requires 8 AA lithium batteries)
- 48" (122.0 cm) and 96" (243.9 cm) extensions available, maximum of 2 per motor
- Battery power recommended for maximum of 10 shades for best battery performance



### Plug-In Transformer

- Eliminates the need for batteries
- Small plug profile
- Cord can be concealed behind curtains or along trim
- 72" (182.9 cm) power cord and 96" (243.9 cm) extension cable (power cord and extension cable cannot be cut to length)
- 48" (122.0 cm) and 96" (243.9 cm) extensions available, maximum of 2 per motor
- We recommend shades greater than 7,200 square inches (46,451.5 cm<sup>2</sup>) utilize a transformer to eliminate changing batteries frequently
- Available in white only

### Transformer Dimensions

- 4" (10.2 cm) wide x 2" (5.1 cm) deep (not including plug) x 1½" (3.8 cm) tall (as you look at the plug in the outlet)
- Wire management components are not included with your motorized shade system
  - Refer to 12 volt power considerations for further details



### Multi-Motor Power Supply

- Used when direct wiring the motorized window coverings
- Each motor is "home run" wired back to the multi-motor power supply using 16 gauge 2 conductor wire (must be purchased locally; Graber® does not supply)
- Power supply includes connectors
- Must be mounted indoors, NEMA rated
- Dimensions: 12" (30.5 cm) wide x 6" (15.3 cm) deep x 12" (30.5 cm) high
- 120 volt AC 3.3 amps

### 12 Volt Motors

- All Graber low voltage: up to 10 motors per power supply

## Options

### Radio Frequency (RF) Controls

**NOTE:** These controls are not compatible with Somfy RTS motors.



#### Virtual Cord™

The Virtual Cord is meant to control an individual shade (one to one). This helps assure simple, reliable control as well as simplifying the process of readjusting pre-set positions should it become necessary—without removing power from adjacent shades. However, the Virtual Cord can be paired to multiple shades to provide group control (onsite programming step).

- Not available for sheer or layered shades
- Includes convenient mounting hardware
- Battery included—CR2430
- Available in white



#### Single-Channel Remote

- Used to control single shades or a group of shades simultaneously
- Set and use an intermediate position for your shades
- Includes convenient mounting hardware
- Battery included—CR2430
- Available in white



#### Single-Channel Remote Decorator Wall Plate Kit (single-channel remote sold separately)

- Provides attractive mounting option to match look of existing light switches
- Locates the remote where most convenient for the user
- Helps prevent misplacing of remote when not in use
- Mounts flush to wall with included anchors, no cutting of drywall needed
- Available in white



#### Multi-Channel Remote (12 channel)

- 12 channel remote, controls up to 24 shades
- Control single shades on each channel or group shade performing the same function
- Convenient display provides easy programming
- Set and use an intermediate position for your shades
- Includes mounting wall plate and hardware; mounts to wall with anchors (see multi-channel remote mounting options)
- Batteries included—2 AAA
- Available in white

## Price Charts and Options Pricing

### Virtual Cord™

See options section for illustrations of power and control items listed below. Select motor package and add to price of shade.

### Virtual Cord Motor Package Pricing: Includes Motor, Power Source, and Control

Order Entry: 12V Z-Wave Motor with 2 Button Remote (option 7)

Motor packages include the two button Virtual Cord™ control for all shade types excluding Mezzanine and Overture shades. The three button single-channel remote is supplied with Mezzanine and Overture shade packages.

Filled Single Battery Case (includes 8 AA lithium batteries) and Control	\$582
Unfilled Single Battery Case and Control	518
Plug-In Transformer with 72" (182.9 cm) Power Cord, 96" (243.9 cm) Extension Cable and Control	582
Dual cases recommended for shades over 3,600 square inches (23,225.8 cm <sup>2</sup> ) to extend battery life.	
Filled Dual Battery Case and Control	\$692
Unfilled Dual Battery Case and Control	563

### Virtual Cord Motor Pricing

See options section for descriptions and illustrations of items listed below.

For motorized lift dual shades, one (1) motor, and one (1) power source are required for each motorized shade (total of two motors and two power sources if both shades of the dual shade are motorized lift).

### Motor Pricing (add price of motor to blind or shade price from product price list)

Order Entry: 12V Z-Wave Motor without Remote (option 10)

Virtual Cord Motor Options	
Cellular, Pleated, or Roman Shades	\$384
Roller, Solar, Layered, Soft and Sheer Shades	384
Natural Shades	384 per panel

For all other non-motorization options, see individual price list for specific blind or shade.

### A. Virtual Cord Power Sources

**Power Source**—Choose one (1) battery option, one (1) transformer per motor, or select multi-motor power supply.

**NOTE:** For natural shades surcharge is per panel.

12 Volt Power Options	
Unfilled Single 12 Volt Reloadable Battery Case, Requires 8 AA Lithium Batteries	\$45
Filled Single 12 Volt Reloadable Battery Case, Filled	109
Unfilled Dual 12 Volt Reloadable Battery Case*: Requires 16 AA Lithium Batteries.	90
Filled Dual 12 Volt Battery Case*	219
48" (122.0 cm) Extension Cable	20
96" (243.9 cm) Extension Cable	24
Plug-In Transformer	109
12 Volt Multi Motor Power Supply 10 Motors—Up to 10 Motors Per Power Supply	1,122
*Dual battery cases are required for shades greater than 3,600 square inches (23,225.8 cm <sup>2</sup> ) to extend battery life. Plug-in transformer is required for shades greater than 7,200 square inches (46,451.5 cm <sup>2</sup> ).	

### B. Virtual Cord Motorization Controls

**Controller**—Choose one or more remotes per order. Controllers are wire-free and battery is included.

Radio Frequency Remote Controls	
Virtual Cord (2 button remote) (individual motor)	\$89
Single-Channel Remote	112
Single-Channel Remote Decorator Wall Plate	17
Multi-Channel Remote (includes wall mount and hardware)	245

# GRABER®

Graber is a brand of Springs Window Fashions, the Best Experience Company 

Graber and the Graber logo are registered trademarks of Springs Window Fashions, LLC.

19-0618-06 (02/19) 18-10536|S18-10064