

MOTORIZED SHADES WITH VIRTUAL CORD™

Table of Contents

Virtual Cord Features and Size Considerations

Motorized Shade Features	2
Radio Frequency (RF) Features	2
Single Channel Remote Mounting Options	2
CrystalPleat® Cellular and Pleated Shades Motorized Lift.	3
Fresco® Roman Shades Motorized Lift	4
Tradewinds® Natural Shades Motorized Lift.	5
Artisan Soft Shades Motorized Lift.	6
Mezzanine Layered Shades Motorized Lift, Light Gap	7
Overture Sheer Shades Motorized Lift, Light Gap.	8
LightWeaves® Roller and Solar Shades Motorized Lift	9
LightWeaves 12 Volt Motor: Maximum Shade Size.	10-12
LightWeaves Dual Shades: Maximum Shade Size	13-15

Virtual Cord Options

12 Volt Power Considerations	16-17
12 Volt Power Components	18
Radio Frequency (RF) Controls	18

Virtual Cord Pricing Chart and Options Pricing

Low Voltage Radio Frequency (RF)	19
Motor Package Pricing	19
Direct Wiring Motors to Multi-Motor Power Supply.	19
Optional Control	19
Optional Replacement Controls and Installation Accessories.	19

Virtual Cord™ Features

Motorized Shade Features

Refer to individual price list for specific option and size information for the product being ordered.

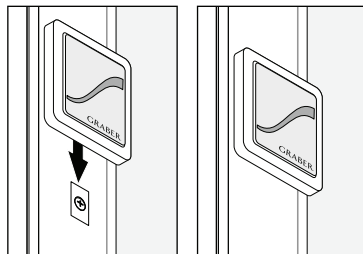
Radio Frequency (RF) Features

Graber® Virtual Cord controlled motorized shades feature advanced radio technology which provides reliable, effortless operation of window coverings. The radio technology utilized is Z-Wave which is supported by an alliance of countless smart home products and home automation providers making integration simple and inexpensive. Graber Virtual Cord motorized shades are quiet, simple to install and adjust, and simple to operate. These automated shades also feature:

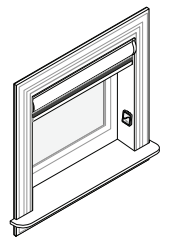
- Simple, intuitive control by means of the unique Virtual Cord (included with every shade)
- An optional single channel remote is also available to control shades individually or in a group
- Shades can be conveniently operated from virtually anywhere in the home, up to 65 feet (19.9 m)
- Consistent motor speed regardless of size or weight
- Efficiently manages energy (heat gain and loss)
- A safer alternative to accessible cords that are traditionally used to operate window coverings; ideal for homes with children and pets
- Clean design with LED operation confirmation
- Push button control on shade end cap provides both a programming function at set-up and shade operation should the control be misplaced
- LED feedback on controls simplify operation and programming
- Quiet, smooth shade operation
- Limit safety protection feature simplifies reprogramming, should it be necessary, while protecting the shade from damage
- Convenient soft-start and soft-end add a touch of class to shade travel
- Low voltage motorization requires no costly electrical hard-wiring

Control Options Available:

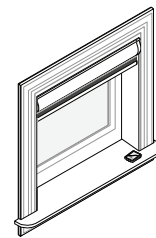
- Virtual Cord: simple, convenient control at the window shade location or control across the room (included with shade)



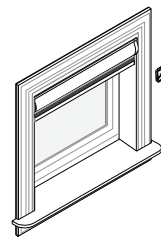
Virtual Cord Control



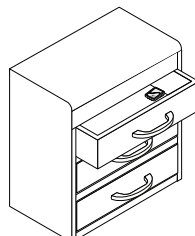
Attached to the Window Molding



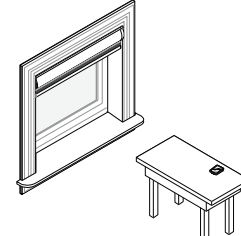
Attached to the Window Sill



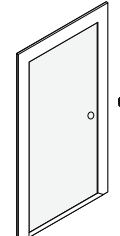
Attached to the Wall



Store in a Drawer



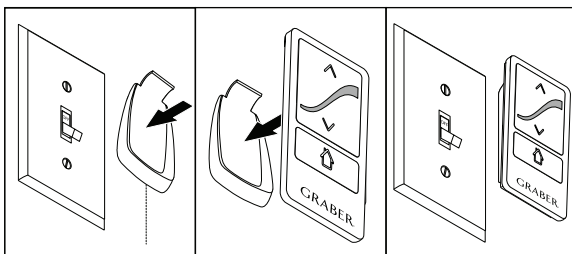
On a Table



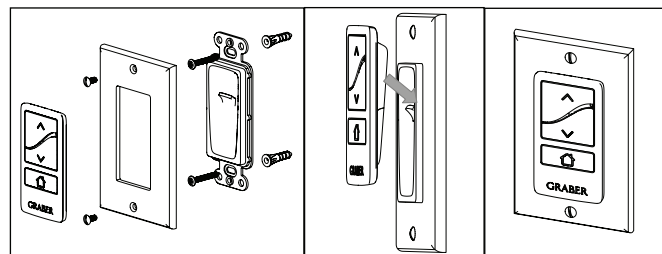
Mounted by the Door

- Optional single channel remote: control can be conveniently mounted or placed on a table and controlled from anywhere in the room
 - Create group shade control
 - Set and control an intermediate position (home)

Single Channel Remote Mounting Options



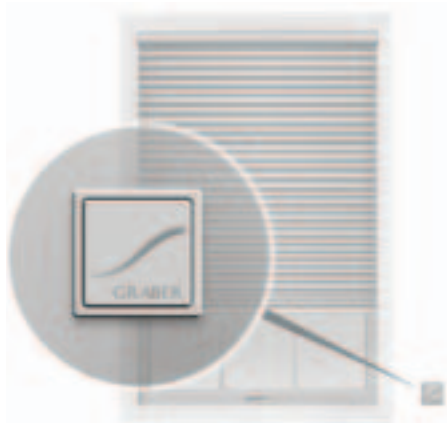
Single Channel Remote



Optional Decorator Wall Plate Mount
(see Virtual Cord options for details)

Virtual Cord™ Features and Size Considerations

CrystalPleat® Cellular and Pleated Shades Motorized Lift



Refer to individual price list for specific option and size information for the product being ordered.

Features

- Simple, intuitive control by means of the unique Virtual Cord (included with every shade)
- An optional single channel remote is also available to control shades individually or in a group
- Shades can be conveniently operated from virtually anywhere in the home, up to 65 feet (19.9 m)
- Consistent motor speed regardless of size or weight
- Efficiently manages energy (heat gain and loss)
- A safer alternative to accessible cords that are traditionally used to operate window coverings; ideal for homes with children and pets
- Clean design with LED operation confirmation
- Push button control on shade end cap provides both a programming function at set-up and shade operation should the control be misplaced
- LED feedback on controls simplify operation and programming
- Quiet, smooth shade operation
- Limit safety protection feature simplifies reprogramming, should it be necessary, while protecting the shade from damage
- Convenient soft-start and soft-end add a touch of class to shade travel
- Low voltage motorization requires no costly electrical hard-wiring
- Powered with batteries, plug-in transformer, or multi-motor power supply
- Motor located on right side within headrail
- Not available with bottom up/top down, top down only, sun up/sun down, Perfect-Vue™, SkyTrack™, specialty shapes, or multiple shades on one headrail
- Not available with hold down brackets or side mounts

Control and Power Options

- Multiple control and power options available; see Virtual Cord options for availability

NOTE: Motorization components and accessories have a five-year limited warranty, excluding batteries.

Cellular Size Considerations

	Minimum Width* inches (cm)	Maximum Width inches (cm)	Minimum Height inches (cm)	Maximum Height inches (cm)
All Fabric Styles Except Cocoon	20 (50.8)	144 (365.8)†	9 (22.9)	144 (365.8)
Cocoon	20 (50.8)	86 (218.5)	9 (22.9)	96 (243.9)

*For all inside mount applications, 3/8" (1.0 cm) deduction is taken by the manufacturer on overall width.

†Based on fabric width.



Pleated Size Considerations

	Minimum Width* inches (cm)	Maximum Width inches (cm)	Minimum Height inches (cm)	Maximum Height inches (cm)
1" (2.6 cm) FashionPleat®	18 (45.8)	144 (365.8)†	9 (22.9)	96 (243.9)
1" (2.6 cm) EvenPleat®	18 (45.8)	120 (304.8)†	6 (15.3)	96 (243.9)
2" (5.1 cm) EvenPleat	20 (50.8)	144 (365.8)†	12 (30.5)	120 (304.8)**

*For all inside mount applications, 3/8" (1.0 cm) deduction is taken by manufacturer on overall width.

**Height limited to 96" (243.9 cm) with overlap.

†Based on fabric width with overlaps.

Virtual Cord™ Features and Size Considerations

Fresco® Roman Shades Motorized Lift



Refer to individual price list for specific option and size information for the product being ordered.

Features

- Simple, intuitive control by means of the unique Virtual Cord control (included with every shade)
- An optional single channel remote is also available to control shades individually or in a group
- Shades can be conveniently operated from virtually anywhere in the home, up to 65 feet (19.9 m)
- Consistent motor speed regardless of size or weight
- Efficiently manages energy (heat gain and loss)
- A safer alternative to accessible cords that are traditionally used to operate window coverings; ideal for homes with children and pets
- Clean design with LED operation confirmation
- Push button control on shade end cap provides both a programming function at set-up and shade operation should the control be misplaced
- LED feedback on controls to simplify operation and programming
- Quiet, smooth shade operation
- Limit safety protection feature, which simplifies reprogramming (should it be necessary) while protecting the shade from damage
- Convenient soft-start and soft-end that add a touch of class to shade travel
- Low voltage motorization; no costly electrical hard-wiring required
- Powered with batteries, plug-in transformer, or multi motor power supply
- Motor located on right side within headrail
- Available with both flat and looped styles
- Available with fabric valances, wood valances, and cornices
- Available with bead and gimp trim on fabric valances
- Not available with bottom up/top down or multiple shades on one headrail
- Not available with hold down brackets or side mount brackets

Control and Power Options

- Multiple control and power options available; see Virtual Cord options for availability

NOTE: Motorization components and accessories have a five-year limited warranty, excluding batteries.

Roman Size Considerations

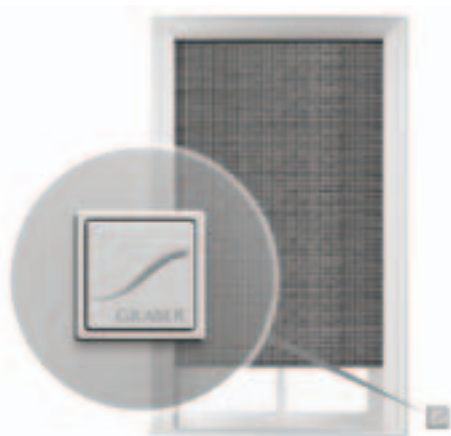
	Minimum Width* inches (cm)	Maximum Width inches (cm)	Minimum Height inches (cm)	Maximum Height inches (cm)
Roman Shades: Classic Flat or Looped	20 (50.8)	144 (365.8) [†]	18 (45.8)	96 (243.9)

*For all inside mount applications, 3/8" (1.0 cm) deduction is taken by manufacturer on overall width.

[†]Based on fabric width.

Virtual Cord™ Size Considerations

Tradewinds® Natural Shades Motorized Lift



Refer to individual price list for specific option and size information for the product being ordered.

Features

- Simple, intuitive control by means of the unique Virtual Cord (included with every shade)
- An optional single channel remote is also available to control shades individually or in a group
- Shades can be conveniently operated from virtually anywhere in the home, up to 65 feet (19.9 m)
- Consistent motor speed regardless of size or weight
- Efficiently manages energy (heat gain and loss)
- A safer alternative to accessible cords that are traditionally used to operate window coverings; ideal for homes with children and pets
- Clean design with LED operation confirmation
- Push button control on shade end cap provides both a programming function at set-up and shade operation should the control be misplaced
- LED feedback on controls simplify operation and programming
- Quiet, smooth shade operation
- Limit safety protection feature simplifies reprogramming, should it be necessary, while protecting the shade from damage
- Convenient soft-start and soft-end add a touch of class to shade travel
- Low voltage motorization requires no costly electrical hard-wiring
- Powered with batteries, plug-in transformer, or multi motor power supply
- Available on standard Roman or old style Roman only
- Available with multiple shades on one headrail; each panel will have a motor and power source; there will be a ½" (1.3 cm) gap between the panels
- Available with fabric edge banding, hem options, and liners
- Motor mounted to the underside of hardwood headrail on right side
- Available with 9" (22.9 cm) standard valance, 9" (22.9 cm) premiere valance, or 9" (22.9 cm) deco trim valance
- Available with bottom corner and bottom center cut-outs
- Not available with special shapes
- Not available with hold down brackets

Control and Power Options

- Multiple control and power options available; see Virtual Cord options for availability

NOTE: Motorization components and accessories have a five-year limited warranty, excluding batteries.

Natural Shades Size Considerations

Style	Minimum Width inches (cm)	Maximum Size	
		Shade square inches (cm ²)	With Liner square inches (cm ²)
Inan, Lipo, Revelry, Serenity, Toushan II, Yunnan	18 (45.8)	2,755 (17,774.2)	2,333 (15,051.6)
Chencun	18 (45.8)	5,194 (33,509.6)	3,878 (25,019.3)
Amour, Boardwalk, Escape, Majian, Merino, Moniz	18 (45.8)	6,058 (39,083.8)	4,330 (27,935.4)
Beachfront, Madeira, Majuro, Meilin, Paralian	18 (45.8)	6,854 (44,219.3)	4,723 (30,470.9)
Azores, Saterra, Terrestrial, Zishan	18 (45.8)	9,149 (59,025.7)	5,712 (36,851.5)

Virtual Cord™ Size Considerations

Artisan Soft Shades Motorized Lift



Refer to individual price list for specific option and size information for the product being ordered.

Features

- Simple, intuitive control by means of the unique Virtual Cord (included with every shade)
- An optional single channel remote is also available to control shades individually or in a group
- Shades can be conveniently operated from virtually anywhere in the home, up to 65 feet (19.9 m)
- Consistent motor speed regardless of size or weight
- Efficiently manages energy (heat gain and loss)
- A safer alternative to accessible cords that are traditionally used to operate window coverings; ideal for homes with children and pets
- Clean design with an LED operation confirmation
- Push button control on shade end cap provides both a programming function at set-up and shade operation should the control be misplaced
- LED feedback on controls simplify operation and programming
- Quiet, smooth shade operation
- Limit safety protection feature simplifies reprogramming, should it be necessary, while protecting the shade from damage
- Convenient soft-start and soft-end add a touch of class to shade travel
- Low voltage motorization requires no costly electrical hard-wiring
- Powered with batteries, plug-in transformer, or multi-motor power supply
- Motor mounted to the underside of hardwood headrail on right side
- Not available with the following:
 - Balloon pleat
 - Blackout liner
 - Multiple shades on one headrail
- Not available with hold down brackets

Control and Power Options

- Multiple control and power options available; see Virtual Cord options for availability

NOTE: Motorization components and accessories have a five-year limited warranty, excluding batteries.

Soft Shades Size Considerations

Width		Length	
Minimum inches (cm)	Maximum inches (cm)	Minimum inches (cm)	Maximum inches (cm)
24 (61.0)	96 (243.9)	18 (45.8)	120 (304.8)

Motorized Maximum Shade Area in Square Inches

Shade Group	12 Volt Motorized		
	Standard or Water Repellant square inches (cm ²)	Thermal square inches (cm ²)	Flannel-Back square inches (cm ²)
1	6,800 (43,870.9)	6,010 (38,774.1)	5,300 (34,193.5)
2	5,612 (36,206.4)	4,958 (31,987.0)	4,600 (29,677.4)
3	4,758 (30,696.7)	4,338 (27,987.0)	4,000 (25,806.4)
4	3,894 (25,122.5)	3,812 (24,593.5)	3,400 (21,935.4)
5	3,318 (21,406.4)	3,230 (20,838.7)	2,840 (18,322.5)
6	N/A	N/A	N/A

NOTE: Area is ordered width x ordered height in square inches.

EXAMPLE: 60" (152.4 cm) wide x 84" (213.4 cm) high = 5,040 square inches (32,516.1 cm²).

Virtual Cord™ Size Considerations

Mezzanine Layered Shades Motorized Lift



Refer to individual price list for specific option and size information for the product being ordered.

Features

- Simple, intuitive single channel remote control included with every shade
- Additional single channel remotes are also available to control shades in a group
- Shades can be conveniently operated from virtually anywhere in the home, up to 65 feet (19.9 m)
- Consistent motor speed regardless of size or weight
- Efficiently manages energy (heat gain and loss)
- A safer alternative to accessible cords that are traditionally used to operate window coverings; ideal for homes with children and pets
- Clean design with LED operation confirmation
- Push button control on shade end cap provides both a programming function at set-up and shade operation should the control be misplaced
- LED feedback on controls simplify operation and programming
- Quiet, smooth shade operation
- Limit safety protection feature simplifies reprogramming, should it be necessary, while protecting the shade from damage
- Convenient soft-start and soft-end add a touch of class to shade travel
- Low voltage motorization requires no costly electrical hard-wiring
- Powered with batteries, plug-in transformer, or multi-motor power supply
- Motor located on right or left side; standard on the right
- Fabric-wrapped cassette comes standard and creates a cohesive appearance in the window
- Not available with hold down brackets

Control and Power Options

- Multiple control and power options available; see Virtual Cord options for availability

NOTE: Motorization components and accessories have a five-year limited warranty, excluding batteries.

Light Gap

The fabric width is narrower than the finished shade width of the tube and its components. See chart below for light gap.

Motor End		Idle End	
Inside Mount inches (cm)	Outside Mount inches (cm)	Inside Mount inches (cm)	Outside Mount inches (cm)
1 ¹ / ₁₆ (2.7)	1 (2.6)	³ / ₄ (2.0)	1 ¹ / ₁₆ (1.8)

Layered Shades Size Considerations

Style Name	Maximum Width* inches (cm)	Maximum Height* inches (cm)
Aravalli	96 (243.9)	52 (132.1)
Bernina	96 (243.9)	110 (279.4)
Cordillera	85 (215.9)	75 (190.5)
Crestones	97 (246.4)	84 (213.4)
Culebra	95 (241.3)	110 (279.4)
Glorieta	98 (249.0)	110 (279.4)
Glorieta Sheen	98 (249.0)	110 (279.4)
Herard	97 (246.4)	77 (195.6)
Vanoise	91 (231.2)	95 (241.3)
Venado	85 (215.9)	75 (190.5)

Minimum width: motorized lift 16" (40.7 cm).

Minimum length: 12" (30.5 cm) all control types.

*If the height is shorter than the maximum, a slightly larger width may be available to order. Maximum width is 102" (259.1 cm).

Virtual Cord™ Size Considerations

Overture Sheer Shades Motorized Lift



Refer to individual price list for specific option and size information for the product being ordered.

Features

- Simple, intuitive single channel remote control included with every shade
- Additional single channel remotes are also available to control shades in a group
- Shades can be conveniently operated from virtually anywhere in the home, up to 65 feet (19.9 m)
- Consistent motor speed regardless of size or weight
- Efficiently manages energy (heat gain and loss)
- A safer alternative to accessible cords that are traditionally used to operate window coverings; ideal for homes with children and pets
- Clean design with LED operation confirmation
- Push button control on shade end cap provides both a programming function at set-up and shade operation should the control be misplaced
- LED feedback on controls simplify operation and programming
- Quiet, smooth shade operation
- Limit safety protection feature simplifies reprogramming, should it be necessary, while protecting the shade from damage
- Convenient soft-start and soft-end add a touch of class to shade travel
- Low voltage motorization requires no costly electrical hard-wiring
- Powered with batteries, plug-in transformer, or multi-motor power supply
- Motor located on right or left side; standard on the right
- Fabric-wrapped cassette comes standard and creates a cohesive appearance in the window
- Not available with hold down brackets

Control and Power Options

- Multiple control and power options available; see Virtual Cord options for availability

NOTE: Motorization components and accessories have a five-year limited warranty, excluding batteries.

Light Gap

The fabric width is narrower than the finished shade width of the tube and its components. See chart below for light gap.

Motor End		Idle End	
Inside Mount inches (cm)	Outside Mount inches (cm)	Inside Mount inches (cm)	Outside Mount inches (cm)
1 (2.6)	¹⁵ / ₁₆ (2.4)	¹¹ / ₁₆ (1.8)	⁵ / ₈ (1.6)

Sheer Shades Size Considerations

Style Name	Maximum Width* inches (cm)	Maximum Height* inches (cm)
Glessner 2" (5.1 cm)	96 (243.9)	105 (266.7)
Glessner Sheen 2" (5.1 cm)	98 (249.0)	110 (279.4)
Glessner Woven 2" (5.1 cm)	96 (243.9)	110 (279.4)
Glessner 3" (7.7 cm)	96 (243.9)	105 (266.7)
Glessner Sheen 3" (7.7 cm)	98 (249.0)	110 (279.4)
Glessner Woven 3" (7.7 cm)	96 (243.9)	110 (279.4)
Marisco 2" (5.1 cm)	94 (238.8)	99 (251.5)
Marisco 2 ³ / ₄ " (7.0 cm)	94 (238.8)	98 (249.0)
San Simeon 3" (7.7 cm)	96 (243.9)	65 (165.1)
Roslin	94 (238.8)	75 (190.5)
Winchester	97 (246.4)	87 (221.0)
Winchester Sheen	102 (259.1)	69 (175.3)
Winchester Woven	97 (246.4)	87 (221.0)

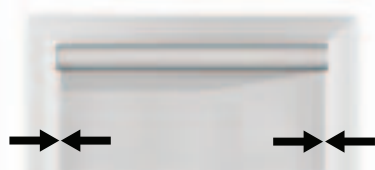
Minimum width: motorized lift 16" (40.7 cm).

Minimum length: 12" (30.5 cm) all control types.

*If the height is shorter than the maximum, a slightly larger width may be available to order. Maximum width is 102" (259.1 cm).

Virtual Cord™ Size Considerations

LightWeaves® Roller and Solar Shades Motorized Lift



Inside Mount Light Gap
Refer to Light Gap Chart

Refer to individual price list for specific option and size information for the product being ordered.

Features

- Simple, intuitive control by means of the unique Virtual Cord (included with every shade)
- An optional single channel remote is also available to control shades individually or in a group
- Shades can be conveniently operated from virtually anywhere in the home, up to 65 feet (19.9 m)
- Consistent motor speed regardless of size or weight
- Efficiently manages energy (heat gain and loss)
- A safer alternative to accessible cords that are traditionally used to operate window coverings; ideal for homes with children and pets
- Clean design with LED operation confirmation
- Push button control on shade end cap provides both a programming function at set-up and shade operation should the control be misplaced
- LED feedback on controls simplify operation and programming
- Quiet, smooth shade operation
- Limit safety protection feature simplifies reprogramming, should it be necessary, while protecting the shade from damage
- Convenient soft-start and soft-end add a touch of class to shade travel
- Low voltage motorization requires no costly electrical hard-wiring
- Powered with batteries, plug-in transformer, or multi-motor power supply
- Available with standard or reverse roll; cassette and fascia valance only available with standard roll
- Available with side channels with sealed hem bar only
- Motor located on the left or right side; standard on the right
- Not available with hold down brackets

Control and Power Options

- Multiple control and power options available; see Virtual Cord options for availability

NOTE: Motorization components and accessories have a five-year limited warranty, excluding batteries.

Inside Mount Light Gap	
Control Type	Light Gap per Side inches (cm)
Motorized	½ (1.3) to ¾ (2.1)
Motorized with Cassette	½ (1.3) to ¾ (2.4)
Dual Motorized	¾ (1.5) to 1 (2.3)
Dual Motorized with Cassette	¾ (1.5) to 1 (2.6)

Size Considerations		
Motor Type	Minimum Width inches (cm)	Minimum Height inches (cm)
12 Volt	16 (40.7)	13 (33.1)

NOTE: See size charts on following pages.

Virtual Cord™ Size Considerations

Minimum width: 16" (40.6 cm)
Minimum height: 13" (33.0 cm)

LightWeaves® 12 Volt Motor: Maximum Shade Size

Valance Type	Normal Fabric Orientation						Fabric Turned Width For Height (Railroaded)											
	Small Cassette		Medium Cassette		Large Cassette/ Square-Corner Valance/ No Valance		Small Cassette		Medium Cassette		Large Cassette/ Square-Corner Valance/ No Valance		Large Cassette/ Square-Corner Valance/ No Valance at Max Width		3" (7.7 cm) Fascia		4" (10.2 cm) Fascia	
	Width inches (cm)	Height inches (cm)	Width inches (cm)	Height inches (cm)	Width inches (cm)	Height inches (cm)	Width inches (cm)	Height inches (cm)	Width inches (cm)	Height inches (cm)	Width inches (cm)	Height inches (cm)	Width inches (cm)	Height inches (cm)	Width inches (cm)	Height inches (cm)	Width inches (cm)	Height inches (cm)
Fabric	Width	Height	Width	Height	Width	Height	Width	Height	Width	Height	Width	Height	Width	Height	Width	Height	Width	Height
A100	73 (185.5)	108 (274.4)	73 (185.5)	108 (274.4)	73 (185.5)	108 (274.4)	73 (185.5)	108 (274.4)	73 (185.5)	108 (274.4)	73 (185.5)	108 (274.4)	73 (185.5)	108 (274.4)	73 (185.5)	108 (274.4)	73 (185.5)	108 (274.4)
A300	73 (185.5)	97 (246.4)	71 (180.4)	112 (284.5)	71 (180.4)	112 (284.5)	71 (180.4)	112 (284.5)	71 (180.4)	112 (284.5)	71 (180.4)	112 (284.5)	71 (180.4)	112 (284.5)	71 (180.4)	112 (284.5)	71 (180.4)	112 (284.5)
A500	74 (188.0)	106 (269.2)	73 (185.5)	117 (297.2)	73 (185.5)	117 (297.2)	73 (185.5)	117 (297.2)	73 (185.5)	117 (297.2)	73 (185.5)	117 (297.2)	73 (185.5)	117 (297.2)	73 (185.5)	117 (297.2)	73 (185.5)	117 (297.2)
Allure	93 (236.3)	121 (307.4)	93 (236.3)	121 (307.4)	93 (236.3)	121 (307.4)	93 (236.3)	121 (307.4)	93 (236.3)	121 (307.4)	93 (236.3)	121 (307.4)	93 (236.3)	121 (307.4)	93 (236.3)	121 (307.4)	93 (236.3)	121 (307.4)
Aura (Aspen, Tweed)	75 (190.5)	72 (182.9)	82 (208.3)	111 (282.0)	80 (203.2)	125 (317.5)	71 (180.4)	98 (249.0)	80 (203.2)	125 (317.5)	93 (236.3)	121 (307.4)	80 (203.2)	125 (317.5)	93 (236.3)	121 (307.4)	93 (236.3)	121 (307.4)
Aura (Poetry, Sable)	73 (185.5)	72 (182.9)	79 (200.7)	111 (282.0)	77 (195.6)	126 (320.1)	83 (210.8)	86 (218.5)	77 (195.6)	126 (320.1)	86 (218.5)	126 (320.1)	77 (195.6)	126 (320.1)	86 (218.5)	126 (320.1)	77 (195.6)	126 (320.1)
B500	61 (155.0)	87 (221.0)	71 (180.4)	95 (241.3)	71 (180.4)	95 (241.3)	71 (180.4)	95 (241.3)	71 (180.4)	95 (241.3)	71 (180.4)	95 (241.3)	71 (180.4)	95 (241.3)	71 (180.4)	95 (241.3)	71 (180.4)	95 (241.3)
B1000	70 (177.8)	82 (208.3)	76 (193.1)	123 (312.5)	76 (193.1)	123 (312.5)	80 (203.2)	97 (246.4)	76 (193.1)	123 (312.5)	76 (193.1)	123 (312.5)	76 (193.1)	123 (312.5)	76 (193.1)	123 (312.5)	76 (193.1)	123 (312.5)
Bamboo	71 (180.4)	87 (221.0)	79 (200.7)	123 (312.5)	79 (200.7)	123 (312.5)	82 (208.3)	103 (261.7)	79 (200.7)	123 (312.5)	82 (208.3)	103 (261.7)	79 (200.7)	123 (312.5)	82 (208.3)	103 (261.7)	79 (200.7)	123 (312.5)
Brilliance	76 (193.1)	82 (208.3)	78 (198.2)	125 (317.5)	78 (198.2)	144 (365.8)	72 (182.9)	112 (284.5)	78 (198.2)	144 (365.8)	72 (182.9)	112 (284.5)	78 (198.2)	144 (365.8)	72 (182.9)	112 (284.5)	78 (198.2)	144 (365.8)
Cambridge LF 76" (193.0 cm)	77 (195.6)	144 (365.8)	77 (195.6)	144 (365.8)	77 (195.6)	144 (365.8)	77 (195.6)	144 (365.8)	77 (195.6)	144 (365.8)	77 (195.6)	144 (365.8)	77 (195.6)	144 (365.8)	77 (195.6)	144 (365.8)	77 (195.6)	144 (365.8)
Cambridge LF 92" (233.7 cm)	92 (233.7)	144 (365.8)	92 (233.7)	144 (365.8)	92 (233.7)	144 (365.8)	92 (233.7)	144 (365.8)	92 (233.7)	144 (365.8)	92 (233.7)	144 (365.8)	92 (233.7)	144 (365.8)	92 (233.7)	144 (365.8)	92 (233.7)	144 (365.8)
(Clay, Cobblestone, French Toast, Inkwell, Off White, White)																		
Cambridge RD 76" (193.1 cm)	77 (195.6)	144 (365.8)	77 (195.6)	144 (365.8)	77 (195.6)	144 (365.8)	77 (195.6)	144 (365.8)	77 (195.6)	144 (365.8)	77 (195.6)	144 (365.8)	77 (195.6)	144 (365.8)	77 (195.6)	144 (365.8)	77 (195.6)	144 (365.8)
(Ivory, Rainstorm)																		
Cambridge RD 92" (233.7 cm)	92 (233.7)	144 (365.8)	92 (233.7)	144 (365.8)	92 (233.7)	144 (365.8)	92 (233.7)	144 (365.8)	92 (233.7)	144 (365.8)	92 (233.7)	144 (365.8)	92 (233.7)	144 (365.8)	92 (233.7)	144 (365.8)	92 (233.7)	144 (365.8)
(Clay, Cobblestone, French Toast, Inkwell, Off White, White)																		
Capri	71 (180.4)	113 (287.1)	71 (180.4)	144 (365.8)	71 (180.4)	144 (365.8)	71 (180.4)	144 (365.8)	71 (180.4)	144 (365.8)	71 (180.4)	144 (365.8)	71 (180.4)	144 (365.8)	71 (180.4)	144 (365.8)	71 (180.4)	144 (365.8)
Cirrus	84 (213.4)	101 (256.5)	81 (205.8)	123 (312.5)	81 (205.8)	123 (312.5)	81 (205.8)	123 (312.5)	81 (205.8)	123 (312.5)	81 (205.8)	123 (312.5)	81 (205.8)	123 (312.5)	81 (205.8)	123 (312.5)	81 (205.8)	123 (312.5)
Contour (Alpine)	74 (188.0)	74 (188.0)	80 (203.2)	114 (289.6)	79 (200.7)	125 (317.5)	84 (213.4)	88 (223.6)	79 (200.7)	125 (317.5)	84 (213.4)	88 (223.6)	79 (200.7)	125 (317.5)	84 (213.4)	88 (223.6)	79 (200.7)	125 (317.5)
Contour (Essence, Maple, Natural, Smoke, Smudge)	76 (193.1)	61 (155.0)	83 (210.8)	94 (238.8)	79 (200.7)	121 (307.4)	72 (182.9)	84 (213.4)	79 (200.7)	121 (307.4)	84 (213.4)	84 (213.4)	79 (200.7)	121 (307.4)	84 (213.4)	84 (213.4)	79 (200.7)	121 (307.4)
Crossweave	72 (182.9)	129 (327.7)	72 (182.9)	144 (365.8)	72 (182.9)	144 (365.8)	72 (182.9)	144 (365.8)	72 (182.9)	144 (365.8)	72 (182.9)	144 (365.8)	72 (182.9)	144 (365.8)	72 (182.9)	144 (365.8)	72 (182.9)	144 (365.8)
Crystalline	77 (195.6)	144 (365.8)	77 (195.6)	144 (365.8)	77 (195.6)	144 (365.8)	77 (195.6)	144 (365.8)	77 (195.6)	144 (365.8)	77 (195.6)	144 (365.8)	77 (195.6)	144 (365.8)	77 (195.6)	144 (365.8)	77 (195.6)	144 (365.8)
Crystalline Essence	77 (195.6)	144 (365.8)	77 (195.6)	144 (365.8)	77 (195.6)	144 (365.8)	77 (195.6)	144 (365.8)	77 (195.6)	144 (365.8)	77 (195.6)	144 (365.8)	77 (195.6)	144 (365.8)	77 (195.6)	144 (365.8)	77 (195.6)	144 (365.8)
Cumulus	73 (185.5)	87 (221.0)	80 (203.2)	127 (322.6)	80 (203.2)	142 (361.6)	83 (210.8)	103 (261.6)	80 (203.2)	142 (361.6)	83 (210.8)	103 (261.6)	80 (203.2)	142 (361.6)	83 (210.8)	103 (261.6)	80 (203.2)	142 (361.6)
Debut	85 (215.9)	131 (332.7)	85 (215.9)	144 (365.8)	85 (215.9)	144 (365.8)	85 (215.9)	144 (365.8)	85 (215.9)	144 (365.8)	85 (215.9)	144 (365.8)	85 (215.9)	144 (365.8)	85 (215.9)	144 (365.8)	85 (215.9)	144 (365.8)
E Screen 1%	81 (205.8)	121 (307.4)	81 (205.8)	121 (307.4)	81 (205.8)	121 (307.4)	81 (205.8)	121 (307.4)	81 (205.8)	121 (307.4)	81 (205.8)	121 (307.4)	81 (205.8)	121 (307.4)	81 (205.8)	121 (307.4)	81 (205.8)	121 (307.4)
E Screen 3%	82 (208.3)	124 (315.0)	82 (208.3)	124 (315.0)	82 (208.3)	124 (315.0)	82 (208.3)	124 (315.0)	82 (208.3)	124 (315.0)	82 (208.3)	124 (315.0)	82 (208.3)	124 (315.0)	82 (208.3)	124 (315.0)	82 (208.3)	124 (315.0)
Elements	95 (241.3)	108 (274.4)	93 (236.3)	125 (317.5)	93 (236.3)	125 (317.5)	93 (236.3)	125 (317.5)	93 (236.3)	125 (317.5)	93 (236.3)	125 (317.5)	93 (236.3)	125 (317.5)	93 (236.3)	125 (317.5)	93 (236.3)	125 (317.5)

NOTE: See dual shade section for motorization information.

Seams may be added to fabrics to accommodate long shade requirements. Seams will be placed as close to the tube as possible; seam location is not selectable. Seams are visible when the shade is fully extended.

Virtual Cord™ Size Considerations

Minimum width: 16" (40.6 cm)
Minimum height: 13" (33.0 cm)

LightWeaves® 12 Volt Motor: Maximum Shade Size

Valance Type	Normal Fabric Orientation										Fabric Turned Width For Height (Railroaded)											
	Small Cassette		Medium Cassette		Large Cassette/ Square-Corner Valance/ No Valance		3" (7.7 cm) Fascia		4" (10.2 cm) Fascia		Small Cassette		Medium Cassette		Large Cassette/ Square-Corner Valance/ No Valance		Large Cassette/ Square-Corner Valance/ No Valance at Max Width		3" (7.7 cm) Fascia		4" (10.2 cm) Fascia	
	Width inches (cm)	Height inches (cm)	Width inches (cm)	Height inches (cm)	Width inches (cm)	Height inches (cm)	Width inches (cm)	Height inches (cm)	Width inches (cm)	Height inches (cm)	Width inches (cm)	Height inches (cm)	Width inches (cm)	Height inches (cm)	Width inches (cm)	Height inches (cm)	Width inches (cm)	Height inches (cm)	Width inches (cm)	Height inches (cm)	Width inches (cm)	Height inches (cm)
SheerWeave® 2390 Performance Plus	82 (208.3)	129 (327.7)	82 (208.3)	129 (327.7)	82 (208.3)	129 (327.7)	82 (208.3)	129 (327.7)	82 (208.3)	129 (327.7)	82 (208.3)	129 (327.7)	82 (208.3)	129 (327.7)	82 (208.3)	129 (327.7)	82 (208.3)	129 (327.7)	82 (208.3)	129 (327.7)	82 (208.3)	129 (327.7)
SheerWeave 2410	80 (203.2)	121 (307.4)	80 (203.2)	121 (307.4)	80 (203.2)	121 (307.4)	80 (203.2)	121 (307.4)	80 (203.2)	121 (307.4)	80 (203.2)	121 (307.4)	80 (203.2)	121 (307.4)	80 (203.2)	121 (307.4)	80 (203.2)	121 (307.4)	80 (203.2)	121 (307.4)	80 (203.2)	121 (307.4)
SheerWeave 2410 Performance Plus	80 (203.2)	121 (307.4)	80 (203.2)	121 (307.4)	80 (203.2)	121 (307.4)	80 (203.2)	121 (307.4)	80 (203.2)	121 (307.4)	80 (203.2)	121 (307.4)	80 (203.2)	121 (307.4)	80 (203.2)	121 (307.4)	80 (203.2)	121 (307.4)	80 (203.2)	121 (307.4)	80 (203.2)	121 (307.4)
SheerWeave 2500	80 (203.2)	101 (256.5)	77 (195.6)	124 (315.0)	77 (195.6)	124 (315.0)	77 (195.6)	124 (315.0)	77 (195.6)	124 (315.0)	77 (195.6)	124 (315.0)	77 (195.6)	124 (315.0)	77 (195.6)	124 (315.0)	77 (195.6)	124 (315.0)	77 (195.6)	124 (315.0)	77 (195.6)	124 (315.0)
SheerWeave 2701	84 (213.4)	89 (226.1)	79 (200.7)	124 (315.0)	79 (200.7)	124 (315.0)	79 (200.7)	124 (315.0)	79 (200.7)	124 (315.0)	84 (213.4)	89 (226.1)	79 (200.7)	124 (315.0)	79 (200.7)	124 (315.0)	79 (200.7)	124 (315.0)	79 (200.7)	124 (315.0)	79 (200.7)	124 (315.0)
SheerWeave 2705	86 (218.5)	97 (246.4)	82 (208.3)	129 (327.7)	82 (208.3)	129 (327.7)	82 (208.3)	129 (327.7)	82 (208.3)	129 (327.7)	86 (218.5)	97 (246.4)	82 (208.3)	129 (327.7)	82 (208.3)	129 (327.7)	82 (208.3)	129 (327.7)	82 (208.3)	129 (327.7)	82 (208.3)	129 (327.7)
SheerWeave 2706	73 (185.5)	113 (287.1)	82 (208.3)	144 (365.8)	82 (208.3)	144 (365.8)	82 (208.3)	144 (365.8)	82 (208.3)	144 (365.8)	73 (185.5)	113 (287.1)	82 (208.3)	144 (365.8)	82 (208.3)	144 (365.8)	82 (208.3)	144 (365.8)	82 (208.3)	144 (365.8)	82 (208.3)	144 (365.8)
SheerWeave 3000	71 (180.4)	100 (254.0)	80 (203.2)	127 (322.6)	80 (203.2)	127 (322.6)	80 (203.2)	127 (322.6)	80 (203.2)	127 (322.6)	71 (180.4)	100 (254.0)	80 (203.2)	127 (322.6)	80 (203.2)	127 (322.6)	80 (203.2)	127 (322.6)	80 (203.2)	127 (322.6)	80 (203.2)	127 (322.6)
SheerWeave 4000	69 (175.3)	79 (200.7)	75 (190.5)	118 (299.8)	74 (188.0)	125 (317.5)	79 (200.7)	94 (238.8)	74 (188.0)	125 (317.5)	69 (175.3)	79 (200.7)	75 (190.5)	118 (299.8)	74 (188.0)	125 (317.5)	79 (200.7)	94 (238.8)	74 (188.0)	125 (317.5)	79 (200.7)	94 (238.8)
SheerWeave 4100	68 (172.7)	82 (208.3)	76 (193.1)	123 (312.4)	76 (193.1)	123 (312.4)	76 (193.1)	123 (312.4)	76 (193.1)	123 (312.4)	68 (172.7)	82 (208.3)	76 (193.1)	123 (312.4)	76 (193.1)	123 (312.4)	76 (193.1)	123 (312.4)	76 (193.1)	123 (312.4)	76 (193.1)	123 (312.4)
SheerWeave 4400	82 (208.3)	77 (195.6)	75 (190.5)	110 (279.4)	73 (185.5)	123 (312.4)	78 (198.2)	91 (231.2)	73 (185.5)	123 (312.4)	82 (208.3)	77 (195.6)	75 (190.5)	110 (279.4)	73 (185.5)	123 (312.4)	78 (198.2)	91 (231.2)	73 (185.5)	123 (312.4)	78 (198.2)	91 (231.2)
SheerWeave 4500	85 (215.9)	97 (246.4)	82 (208.3)	122 (309.9)	82 (208.3)	122 (309.9)	82 (208.3)	122 (309.9)	82 (208.3)	122 (309.9)	85 (215.9)	97 (246.4)	82 (208.3)	122 (309.9)	82 (208.3)	122 (309.9)	82 (208.3)	122 (309.9)	82 (208.3)	122 (309.9)	82 (208.3)	122 (309.9)
SheerWeave 4550	67 (170.2)	97 (246.4)	76 (193.1)	123 (312.4)	76 (193.1)	123 (312.4)	77 (195.6)	115 (292.1)	76 (193.1)	123 (312.4)	67 (170.2)	97 (246.4)	76 (193.1)	123 (312.4)	76 (193.1)	123 (312.4)	77 (195.6)	115 (292.1)	76 (193.1)	123 (312.4)	77 (195.6)	115 (292.1)
SheerWeave 4600	85 (215.9)	93 (236.3)	81 (205.8)	121 (307.4)	81 (205.8)	121 (307.4)	81 (205.8)	121 (307.4)	81 (205.8)	121 (307.4)	85 (215.9)	93 (236.3)	81 (205.8)	121 (307.4)	81 (205.8)	121 (307.4)	81 (205.8)	121 (307.4)	81 (205.8)	121 (307.4)	81 (205.8)	121 (307.4)
SheerWeave 4650	70 (177.8)	78 (198.2)	75 (190.5)	121 (307.4)	75 (190.5)	123 (312.4)	79 (200.7)	94 (238.8)	75 (190.5)	123 (312.4)	70 (177.8)	78 (198.2)	75 (190.5)	121 (307.4)	75 (190.5)	123 (312.4)	79 (200.7)	94 (238.8)	75 (190.5)	123 (312.4)	79 (200.7)	94 (238.8)
SheerWeave 4800	85 (215.9)	93 (236.3)	81 (205.8)	120 (304.8)	81 (205.8)	120 (304.8)	81 (205.8)	120 (304.8)	81 (205.8)	120 (304.8)	85 (215.9)	93 (236.3)	81 (205.8)	120 (304.8)	81 (205.8)	120 (304.8)	81 (205.8)	120 (304.8)	81 (205.8)	120 (304.8)	81 (205.8)	120 (304.8)
SheerWeave 7100	76 (193.1)	106 (269.2)	74 (188.0)	121 (307.4)	74 (188.0)	121 (307.4)	74 (188.0)	121 (307.4)	74 (188.0)	121 (307.4)	76 (193.1)	106 (269.2)	74 (188.0)	121 (307.4)	74 (188.0)	121 (307.4)	74 (188.0)	121 (307.4)	74 (188.0)	121 (307.4)	74 (188.0)	121 (307.4)
Sheffield (Chelsea, Henley, Meadow, Windsor)	72 (182.9)	143 (363.3)	72 (182.9)	144 (365.8)	72 (182.9)	144 (365.8)	72 (182.9)	144 (365.8)	72 (182.9)	144 (365.8)	72 (182.9)	143 (363.3)	72 (182.9)	144 (365.8)	72 (182.9)	144 (365.8)	72 (182.9)	144 (365.8)	72 (182.9)	144 (365.8)	72 (182.9)	144 (365.8)
Sheffield (Eclipse, Tuscon, Weathered)	72 (182.9)	82 (208.3)	72 (182.9)	140 (355.6)	72 (182.9)	144 (365.8)	72 (182.9)	112 (284.5)	72 (182.9)	144 (365.8)	72 (182.9)	82 (208.3)	72 (182.9)	140 (355.6)	72 (182.9)	144 (365.8)	72 (182.9)	112 (284.5)	72 (182.9)	144 (365.8)	72 (182.9)	144 (365.8)
Stratus	84 (213.4)	106 (269.2)	82 (208.3)	123 (312.4)	82 (208.3)	123 (312.4)	82 (208.3)	123 (312.4)	82 (208.3)	123 (312.4)	84 (213.4)	106 (269.2)	82 (208.3)	123 (312.4)	82 (208.3)	123 (312.4)	82 (208.3)	123 (312.4)	82 (208.3)	123 (312.4)	82 (208.3)	123 (312.4)
Suburban II	72 (182.9)	144 (365.8)	72 (182.9)	144 (365.8)	72 (182.9)	144 (365.8)	72 (182.9)	144 (365.8)	72 (182.9)	144 (365.8)	72 (182.9)	144 (365.8)	72 (182.9)	144 (365.8)	72 (182.9)	144 (365.8)	72 (182.9)	144 (365.8)	72 (182.9)	144 (365.8)	72 (182.9)	144 (365.8)
Tranquility	73 (185.5)	77 (195.6)	80 (203.2)	116 (294.7)	79 (200.7)	123 (312.4)	84 (213.4)	91 (231.2)	79 (200.7)	123 (312.4)	73 (185.5)	77 (195.6)	80 (203.2)	116 (294.7)	79 (200.7)	123 (312.4)	84 (213.4)	91 (231.2)	79 (200.7)	123 (312.4)	84 (213.4)	91 (231.2)
Twine (Driftwood, Flagstone, Jewel, Metal, Oatmeal)	76 (193.1)	63 (160.1)	83 (210.8)	97 (246.4)	79 (200.7)	123 (312.4)	71 (180.4)	87 (221.0)	79 (200.7)	123 (312.4)	76 (193.1)	63 (160.1)	83 (210.8)	97 (246.4)	79 (200.7)	123 (312.4)	71 (180.4)	87 (221.0)	79 (200.7)	123 (312.4)	71 (180.4)	87 (221.0)
Twine (Heritage)	75 (190.5)	82 (208.3)	82 (208.3)	124 (315.0)	82 (208.3)	124 (315.0)	82 (208.3)	124 (315.0)	82 (208.3)	124 (315.0)	75 (190.5)	82 (208.3)	82 (208.3)	124 (315.0)	82 (208.3)	124 (315.0)	82 (208.3)	124 (315.0)	82 (208.3)	124 (315.0)	82 (208.3)	124 (315.0)
Wicker (Brownstone, Dawn, Shell, Terracotta, Thyme, Tiger's Eye)	74 (188.0)	79 (200.7)	80 (203.2)	121 (307.4)	80 (203.2)	125 (317.5)	84 (213.4)	94 (238.8)	80 (203.2)	125 (317.5)	74 (188.0)	79 (200.7)	80 (203.2)	121 (307.4)	80 (203.2)	125 (317.5)	84 (213.4)	94 (238.8)	80 (203.2)	125 (317.5)	84 (213.4)	94 (238.8)
Wicker (Tawny)	73 (185.5)	74 (188.0)	80 (203.2)	111 (282.0)	78 (198.2)	124 (315.0)	84 (213.4)	88 (223.6)	78 (198.2)	124 (315.0)	73 (185.5)	74 (188.0)	80 (203.2)	111 (282.0)	78 (198.2)	124 (315.0)	84 (213.4)	88 (223.6)	78 (198.2)	124 (315.0)	84 (213.4)	88 (223.6)

NOTE: See dual shade section for motorization information.

Seams may be added to fabrics to accommodate long shade requirements. Seams will be placed as close to the tube as possible; seam location is not selectable. Seams are visible when the shade is fully extended.

Virtual Cord™ Size Considerations

This table provides the maximum shade size available by fabric, control type, and valance. Only the large cassette valance is available for the dual shade style. Fabric turned width for height (railroaded) may curl along its edge. This is not a defect in the product. Small and medium cassette valances are not available.

Valance Type	Normal Fabric Orientation						Fabric Turned Width For Height (Railroaded)											
	12 Volt Motor No Cassette/No Valance			12 Volt Motor Large Cassette			12 Volt Motor No Cassette/No Valance			12 Volt Motor Large Cassette								
	Width inches (cm)	Height inches (cm)		Width inches (cm)	Height inches (cm)		Width inches (cm)	Height inches (cm)		Width inches (cm)	Height inches (cm)							
Fabric																		
A100	73 (185.5)	107 (271.8)	95 (241.3)	75 (190.5)	95 (241.3)		73 (185.5)	107 (271.8)	107 (271.8)	75 (190.5)	95 (241.3)		75 (190.5)	95 (241.3)		75 (190.5)	95 (241.3)	
A300	74 (188.0)	92 (233.7)	82 (208.3)	75 (190.5)	82 (208.3)		74 (188.0)	92 (233.7)	92 (233.7)	75 (190.5)	82 (208.3)		75 (190.5)	82 (208.3)		75 (190.5)	82 (208.3)	
A500	75 (190.5)	102 (259.1)	90 (228.6)	76 (193.1)	90 (228.6)		75 (190.5)	102 (259.1)	102 (259.1)	76 (193.1)	90 (228.6)		76 (193.1)	90 (228.6)		76 (193.1)	90 (228.6)	
Allure	93 (236.3)	121 (307.4)	121 (307.4)	93 (236.3)	121 (307.4)		95 (241.3)	98 (249.0)	98 (249.0)	95 (241.3)	98 (249.0)		95 (241.3)	98 (249.0)		95 (241.3)	98 (249.0)	
Aura (Aspen, Tweed)	75 (190.5)	70 (177.8)	63 (160.1)	77 (195.6)	63 (160.1)		Not available						Not available					
Aura (Poetry, Sable)	73 (185.5)	70 (177.8)	63 (160.1)	75 (190.5)	63 (160.1)		Not available						Not available					
B 500	61 (155.0)	84 (213.4)	76 (193.1)	62 (157.5)	76 (193.1)		61 (155.0)	84 (213.4)	68 (172.8)	62 (157.5)	76 (193.1)		62 (157.5)	76 (193.1)		62 (157.5)	76 (193.1)	
B1000	71 (180.4)	77 (195.6)	71 (180.4)	72 (182.9)	71 (180.4)		71 (180.4)	77 (195.6)	77 (195.6)	72 (182.9)	71 (180.4)		72 (182.9)	71 (180.4)		72 (182.9)	71 (180.4)	
Bamboo	72 (182.9)	84 (213.4)	76 (193.1)	73 (185.5)	76 (193.1)		72 (182.9)	84 (213.4)	84 (213.4)	73 (185.5)	76 (193.1)		73 (185.5)	76 (193.1)		73 (185.5)	76 (193.1)	
Brilliance	77 (195.6)	79 (200.7)	71 (180.4)	78 (198.2)	71 (180.4)		Not available						Not available					
Cambridge LF 76" (193.0 cm)	77 (195.6)	144 (365.8)	144 (365.8)	77 (195.6)	144 (365.8)		86 (218.5)	68 (172.8)	66 (167.7)	101 (256.6)	86 (218.5)		101 (256.6)	68 (172.8)		101 (256.6)	66 (167.7)	
Cambridge LF 92" (233.7 cm)	92 (233.7)	144 (365.8)	144 (365.8)	92 (233.7)	144 (365.8)		84 (213.4)	84 (213.4)	82 (206.3)	99 (251.5)	84 (213.4)		99 (251.5)	84 (213.4)		99 (251.5)	82 (206.3)	
Cambridge RD 76" (193.1 cm)	77 (195.6)	142 (360.7)	126 (320.1)	77 (195.6)	126 (320.1)		80 (203.2)	68 (172.8)	66 (167.7)	94 (238.8)	80 (203.2)		94 (238.8)	68 (172.8)		94 (238.8)	66 (167.7)	
Cambridge RD 92" (233.7 cm)	84 (213.4)	135 (342.9)	126 (320.1)	85 (215.9)	126 (320.1)		77 (195.6)	84 (213.4)	82 (206.3)	91 (231.2)	77 (195.6)		91 (231.2)	84 (213.4)		91 (231.2)	82 (206.3)	
Clay, Cobblestone, French Toast, Inkwell, Off White, White)	71 (180.4)	110 (279.4)	99 (251.5)	71 (180.4)	99 (251.5)		Not available						Not available					
Cirrus	84 (213.4)	98 (249.0)	103 (261.7)	71 (180.4)	103 (261.7)		84 (213.4)	98 (249.0)	98 (249.0)	84 (213.4)	71 (180.4)		84 (213.4)	103 (261.7)		84 (213.4)	86 (218.5)	
Contour (Alpine)	74 (188.0)	72 (182.9)	65 (165.1)	76 (193.1)	65 (165.1)		Not available						Not available					
Contour (Essence, Maple, Natural, Smoke, Smudge)	77 (195.6)	59 (149.9)	53 (134.7)	78 (198.2)	53 (134.7)		Not available						Not available					
Crossweave	72 (182.9)	125 (317.5)	114 (289.6)	72 (182.9)	114 (289.6)		100 (254.0)	62 (157.5)	62 (157.5)	100 (254.0)	100 (254.0)		100 (254.0)	62 (157.5)		100 (254.0)	62 (157.5)	
Crystalline	77 (195.6)	144 (365.8)	144 (365.8)	77 (195.6)	144 (365.8)		86 (218.5)	68 (172.8)	66 (167.7)	100 (254.0)	86 (218.5)		100 (254.0)	68 (172.8)		100 (254.0)	66 (167.7)	
Crystalline Essence	77 (195.6)	144 (365.8)	144 (365.8)	77 (195.6)	144 (365.8)		85 (215.9)	68 (172.8)	66 (167.7)	100 (254.0)	85 (215.9)		100 (254.0)	68 (172.8)		100 (254.0)	66 (167.7)	
Cumulus	73 (185.5)	84 (213.4)	76 (193.1)	74 (188.0)	76 (193.1)		73 (185.5)	84 (213.4)	68 (172.8)	90 (228.6)	74 (188.0)		90 (228.6)	76 (193.1)		91 (231.2)	60 (152.4)	
Debut	85 (215.9)	126 (320.1)	112 (284.5)	85 (215.9)	112 (284.5)		Not available						Not available					
E Screen 1%	81 (205.8)	119 (302.3)	106 (269.3)	83 (210.9)	106 (269.3)		Not available						Not available					
E Screen 3%	82 (208.3)	119 (302.3)	106 (269.3)	84 (213.4)	106 (269.3)		Not available						Not available					
Elements	95 (241.3)	107 (271.8)	119 (302.3)	79 (200.7)	119 (302.3)		Not available						Not available					
Essential	70 (177.8)	144 (365.8)	144 (365.8)	70 (177.8)	144 (365.8)		81 (205.8)	123 (312.5)	123 (312.5)	81 (205.8)	81 (205.8)		81 (205.8)	123 (312.5)		81 (205.8)	123 (312.5)	
Eventide	71 (180.4)	100 (254.0)	99 (251.5)	71 (180.4)	99 (251.5)		Not available						Not available					
Fern	74 (188.0)	72 (182.9)	65 (165.1)	76 (193.1)	65 (165.1)		74 (188.0)	72 (182.9)	57 (144.8)	91 (231.2)	76 (193.1)		91 (231.2)	65 (165.1)		93 (236.3)	50 (127.0)	

Seams may be added to fabrics to accommodate long shade requirements. Seams will be placed as close to the tube as possible; seam location is not selectable. Seams are visible when the shade is fully extended.

Virtual Cord™ Size Considerations

This table provides the maximum shade size available by fabric, control type, and valance. Only the large cassette valance is available for the dual shade. style. Fabric turned width for height (railroaded) may curl along its edge. This is not a defect. Small and medium cassette valances are not available. in the product.

LightWeaves® Dual Shades Maximum Shade Size

Valance Type	Normal Fabric Orientation						Fabric Turned Width For Height (Railroaded)						
	12 Volt Motor No Cassette/No Valance			12 Volt Motor Large Cassette			12 Volt Motor No Cassette/No Valance			12 Volt Motor Large Cassette			
	Width inches (cm)	Height inches (cm)	Height inches (cm)	Width inches (cm)	Height inches (cm)	Height inches (cm)	Width inches (cm)	Height inches (cm)	Height inches (cm)	Width inches (cm)	Height inches (cm)	Width inches (cm)	Height inches (cm)
Harmony	92 (233.7)	139 (353.1)	139 (353.1)	92 (233.7)	139 (353.1)	139 (353.1)	Not available	Not available	Not available	Not available	Not available	Not available	Not available
Linen (Burlap, Cream)	78 (198.2)	50 (127.0)	50 (127.0)	79 (200.7)	45 (114.3)	45 (114.3)	Not available	Not available	Not available	Not available	Not available	Not available	Not available
Linen (Cinnamon, Cranberry, Fig, Topaz)	75 (190.5)	68 (172.8)	61 (155.0)	77 (195.6)	61 (155.0)	61 (155.0)	Not available	Not available	Not available	Not available	Not available	Not available	Not available
M Screen 3%	82 (208.3)	119 (302.3)	106 (269.3)	84 (213.4)	106 (269.3)	106 (269.3)	82 (208.3)	119 (302.3)	106 (269.3)	84 (213.4)	106 (269.3)	84 (213.4)	106 (269.3)
M Screen 5%	83 (210.9)	107 (271.8)	95 (241.3)	85 (215.9)	95 (241.3)	95 (241.3)	83 (210.9)	107 (271.8)	95 (241.3)	85 (215.9)	95 (241.3)	85 (215.9)	95 (241.3)
Marquesa	77 (195.6)	59 (149.9)	53 (134.7)	78 (198.2)	53 (134.7)	53 (134.7)	Not available	Not available	Not available	Not available	Not available	Not available	Not available
Menagerie (Birch, Rockefeller)	76 (193.1)	61 (155.0)	55 (139.7)	78 (198.2)	55 (139.7)	55 (139.7)	Not available	Not available	Not available	Not available	Not available	Not available	Not available
Menagerie (Derby, Rust)	78 (198.2)	48 (122.0)	43 (109.3)	79 (200.7)	43 (109.3)	43 (109.3)	Not available	Not available	Not available	Not available	Not available	Not available	Not available
Menagerie (Heystack, Silverstone, Southern Wind)	75 (190.5)	74 (188.0)	67 (170.2)	76 (193.1)	67 (170.2)	67 (170.2)	Not available	Not available	Not available	Not available	Not available	Not available	Not available
Monaco	77 (195.6)	144 (365.8)	144 (365.8)	77 (195.6)	144 (365.8)	144 (365.8)	86 (218.5)	68 (172.8)	66 (167.7)	86 (218.5)	68 (172.8)	101 (256.6)	66 (167.7)
Monticello	75 (190.5)	62 (157.5)	56 (142.3)	77 (195.6)	56 (142.3)	56 (142.3)	75 (190.5)	62 (157.5)	49 (124.5)	77 (195.6)	56 (142.3)	94 (238.8)	43 (109.3)
Opulent	89 (226.1)	132 (335.3)	132 (335.3)	89 (226.1)	132 (335.3)	132 (335.3)	Not available	Not available	Not available	Not available	Not available	Not available	Not available
Origins	75 (190.5)	74 (188.0)	67 (170.2)	77 (195.6)	67 (170.2)	67 (170.2)	Not available	Not available	Not available	Not available	Not available	Not available	Not available
Prairie	91 (231.2)	122 (309.9)	112 (284.5)	92 (233.7)	112 (284.5)	112 (284.5)	Not available	Not available	Not available	Not available	Not available	Not available	Not available
Riverbend	72 (182.9)	82 (208.3)	74 (188.0)	72 (182.9)	82 (208.3)	74 (188.0)	Not available	Not available	Not available	Not available	Not available	Not available	Not available
Royale	72 (182.9)	132 (335.3)	119 (302.3)	72 (182.9)	119 (302.3)	119 (302.3)	Not available	Not available	Not available	Not available	Not available	Not available	Not available
Rujin	72 (182.9)	34 (86.4)	30 (76.2)	72 (182.9)	30 (76.2)	30 (76.2)	Not available	Not available	Not available	Not available	Not available	Not available	Not available
S100 S1	73 (185.5)	107 (271.8)	95 (241.3)	75 (190.5)	95 (241.3)	95 (241.3)	73 (185.5)	107 (271.8)	73 (185.5)	107 (271.8)	75 (190.5)	75 (190.5)	95 (241.3)
S300 S1	74 (188.0)	93 (236.3)	82 (208.3)	74 (188.0)	82 (208.3)	82 (208.3)	74 (188.0)	93 (236.3)	74 (188.0)	93 (236.3)	76 (193.1)	76 (193.1)	82 (208.3)
S500 S1	74 (188.0)	102 (259.1)	90 (228.6)	74 (188.0)	90 (228.6)	90 (228.6)	74 (188.0)	102 (259.1)	74 (188.0)	102 (259.1)	76 (193.1)	76 (193.1)	90 (228.6)
S500 S2	61 (155.0)	84 (213.4)	76 (193.1)	62 (157.5)	76 (193.1)	76 (193.1)	61 (155.0)	84 (213.4)	61 (155.0)	84 (213.4)	62 (157.5)	62 (157.5)	60 (152.4)
Scripture	85 (215.9)	126 (320.1)	112 (284.5)	85 (215.9)	112 (284.5)	112 (284.5)	95 (241.3)	74 (188.0)	74 (188.0)	95 (241.3)	74 (188.0)	95 (241.3)	74 (188.0)
Sedona	72 (182.9)	115 (292.1)	104 (264.2)	72 (182.9)	104 (264.2)	104 (264.2)	100 (254.0)	62 (157.5)	62 (157.5)	100 (254.0)	62 (157.5)	100 (254.0)	62 (157.5)
SheerWeave® 1000	83 (210.9)	119 (302.3)	124 (315.0)	74 (188.0)	124 (315.0)	124 (315.0)	88 (223.6)	119 (302.3)	88 (223.6)	89 (226.1)	106 (269.3)	89 (226.1)	106 (269.3)
SheerWeave 2000	79 (200.7)	126 (320.1)	112 (284.5)	81 (205.8)	112 (284.5)	112 (284.5)	79 (200.7)	126 (320.1)	79 (200.7)	126 (320.1)	81 (205.8)	81 (205.8)	112 (284.5)
SheerWeave 2100	82 (208.3)	119 (302.3)	106 (269.3)	84 (213.4)	106 (269.3)	106 (269.3)	82 (208.3)	119 (302.3)	82 (208.3)	119 (302.3)	84 (213.4)	84 (213.4)	106 (269.3)
SheerWeave 2360	82 (208.3)	142 (360.7)	126 (320.1)	84 (213.4)	126 (320.1)	126 (320.1)	82 (208.3)	142 (360.7)	82 (208.3)	142 (360.7)	84 (213.4)	84 (213.4)	126 (320.1)
SheerWeave 2390	82 (208.3)	129 (327.7)	126 (320.1)	82 (208.3)	126 (320.1)	126 (320.1)	82 (208.3)	129 (327.7)	82 (208.3)	129 (327.7)	82 (208.3)	82 (208.3)	126 (320.1)
SheerWeave 2390 Performance Plus	82 (208.3)	129 (327.7)	119 (302.3)	83 (210.9)	119 (302.3)	119 (302.3)	82 (208.3)	129 (327.7)	82 (208.3)	129 (327.7)	83 (210.9)	83 (210.9)	119 (302.3)
SheerWeave 2410	80 (203.2)	121 (307.4)	112 (284.5)	81 (205.8)	112 (284.5)	112 (284.5)	80 (203.2)	121 (307.4)	80 (203.2)	121 (307.4)	81 (205.8)	81 (205.8)	112 (284.5)
SheerWeave 2410 Performance Plus	80 (203.2)	121 (307.4)	112 (284.5)	81 (205.8)	112 (284.5)	112 (284.5)	80 (203.2)	121 (307.4)	80 (203.2)	121 (307.4)	81 (205.8)	81 (205.8)	112 (284.5)
SheerWeave 2500	81 (205.8)	98 (249.0)	86 (218.5)	83 (210.9)	86 (218.5)	86 (218.5)	81 (205.8)	98 (249.0)	81 (205.8)	98 (249.0)	83 (210.9)	83 (210.9)	86 (218.5)
SheerWeave 2701	85 (215.9)	85 (215.9)	92 (233.7)	71 (180.4)	85 (215.9)	85 (215.9)	85 (215.9)	85 (215.9)	85 (215.9)	85 (215.9)	71 (180.4)	71 (180.4)	75 (190.5)
SheerWeave 2703	71 (180.4)	96 (243.9)	90 (228.6)	72 (182.9)	90 (228.6)	90 (228.6)	71 (180.4)	96 (243.9)	71 (180.4)	96 (243.9)	72 (182.9)	72 (182.9)	72 (182.9)

Seams may be added to fabrics to accommodate long shade requirements. Seams will be placed as close to the tube as possible; seam location is not selectable. Seams are visible when the shade is fully extended.

Virtual Cord™ Size Considerations

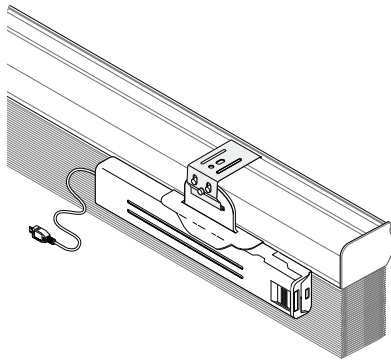
This table provides the maximum shade size available by fabric, control type, and valance. Only the large cassette valance is available for the dual shade style. Fabric turned width for height (railroaded) may curl along its edge. This is not a defect. Small and medium cassette valances are not available in the product.

Valance Type		Normal Fabric Orientation										Fabric Turned Width For Height (Railroaded)								
		12 Volt Motor No Cassette/No Valance					12 Volt Motor Large Cassette					12 Volt Motor No Cassette/No Valance at Max Width			12 Volt Motor Large Cassette			12 Volt Motor Large Cassette at Max Width		
		Width inches (cm)	Height inches (cm)	Width inches (cm)	Height inches (cm)	Width inches (cm)	Height inches (cm)	Width inches (cm)	Height inches (cm)	Width inches (cm)	Height inches (cm)	Width inches (cm)	Height inches (cm)	Width inches (cm)	Height inches (cm)	Width inches (cm)	Height inches (cm)	Width inches (cm)	Height inches (cm)	
SheerWeave® 2705	72 (182.9)	106 (269.3)	72 (182.9)	104 (264.2)	72 (182.9)	106 (269.3)	72 (182.9)	106 (269.3)	87 (221.0)	93 (236.3)	87 (221.0)	93 (236.3)	87 (221.0)	104 (264.2)	89 (226.1)	82 (208.3)	89 (226.1)	82 (208.3)		
SheerWeave 2710	73 (185.5)	113 (287.1)	74 (188.0)	104 (264.2)	74 (188.0)	113 (287.1)	73 (185.5)	113 (287.1)	89 (226.1)	93 (236.3)	89 (226.1)	93 (236.3)	89 (226.1)	104 (264.2)	91 (231.2)	82 (208.3)	91 (231.2)	82 (208.3)		
SheerWeave 3000	71 (180.4)	100 (254.0)	72 (182.9)	91 (231.2)	71 (180.4)	100 (254.0)	71 (180.4)	91 (231.2)	87 (221.0)	82 (208.3)	87 (221.0)	82 (208.3)	87 (221.0)	91 (231.2)	89 (226.1)	72 (182.9)	89 (226.1)	72 (182.9)		
SheerWeave 4000	70 (177.8)	75 (190.5)	71 (180.4)	69 (175.3)	71 (180.4)	75 (190.5)	70 (177.8)	69 (175.3)	86 (218.5)	61 (155.0)	86 (218.5)	61 (155.0)	86 (218.5)	69 (175.3)	88 (223.6)	54 (137.2)	88 (223.6)	54 (137.2)		
SheerWeave 4100	71 (180.4)	77 (195.6)	72 (182.9)	71 (180.4)	71 (180.4)	77 (195.6)	71 (180.4)	71 (180.4)	87 (221.0)	63 (160.1)	87 (221.0)	63 (160.1)	87 (221.0)	71 (180.4)	89 (226.1)	56 (142.3)	89 (226.1)	56 (142.3)		
SheerWeave 4400	69 (175.3)	74 (188.0)	70 (177.8)	67 (170.2)	70 (177.8)	74 (188.0)	69 (175.3)	67 (170.2)	85 (215.9)	59 (149.9)	85 (215.9)	59 (149.9)	85 (215.9)	67 (170.2)	87 (221.0)	52 (132.1)	87 (221.0)	52 (132.1)		
SheerWeave 4500	83 (210.9)	98 (249.0)	85 (215.9)	86 (218.5)	83 (210.9)	98 (249.0)	83 (210.9)	86 (218.5)	83 (210.9)	98 (249.0)	83 (210.9)	98 (249.0)	83 (210.9)	86 (218.5)	85 (215.9)	86 (218.5)	85 (215.9)	86 (218.5)		
SheerWeave 4550	71 (180.4)	108 (274.4)	72 (182.9)	101 (256.6)	71 (180.4)	108 (274.4)	71 (180.4)	101 (256.6)	86 (218.5)	93 (236.3)	86 (218.5)	93 (236.3)	86 (218.5)	101 (256.6)	88 (223.6)	82 (208.3)	88 (223.6)	82 (208.3)		
SheerWeave 4600	68 (172.8)	94 (238.8)	70 (177.8)	83 (210.9)	68 (172.8)	94 (238.8)	70 (177.8)	83 (210.9)	84 (213.4)	76 (193.1)	84 (213.4)	76 (193.1)	84 (213.4)	83 (210.9)	86 (218.5)	67 (170.2)	86 (218.5)	67 (170.2)		
SheerWeave 4650	71 (180.4)	101 (256.6)	71 (180.4)	99 (251.5)	71 (180.4)	101 (256.6)	71 (180.4)	99 (251.5)	86 (218.5)	89 (226.1)	86 (218.5)	89 (226.1)	86 (218.5)	99 (251.5)	88 (223.6)	79 (200.7)	88 (223.6)	79 (200.7)		
SheerWeave 4800	70 (177.8)	76 (193.1)	71 (180.4)	69 (175.3)	70 (177.8)	76 (193.1)	70 (177.8)	69 (175.3)	86 (218.5)	61 (155.0)	86 (218.5)	61 (155.0)	86 (218.5)	69 (175.3)	88 (223.6)	54 (137.2)	88 (223.6)	54 (137.2)		
SheerWeave 7000	71 (180.4)	100 (254.0)	71 (180.4)	99 (251.5)	71 (180.4)	100 (254.0)	71 (180.4)	99 (251.5)	Not available	Not available	Not available	Not available	Not available	69 (175.3)	88 (223.6)	54 (137.2)	88 (223.6)	54 (137.2)		
SheerWeave 7100	77 (195.6)	102 (259.1)	79 (200.7)	90 (228.6)	79 (200.7)	102 (259.1)	79 (200.7)	90 (228.6)	Not available	Not available	Not available	Not available	Not available	69 (175.3)	88 (223.6)	54 (137.2)	88 (223.6)	54 (137.2)		
Sheffield (Chelsea, Henley, Meadow, Windsor)	72 (182.9)	138 (350.6)	72 (182.9)	125 (317.5)	72 (182.9)	138 (350.6)	72 (182.9)	125 (317.5)	101 (256.6)	62 (157.5)	101 (256.6)	62 (157.5)	101 (256.6)	62 (157.5)	101 (256.6)	62 (157.5)	101 (256.6)	62 (157.5)		
Sheffield (Eclipse, Tuscon, Weathered)	72 (182.9)	79 (200.7)	72 (182.9)	71 (180.4)	72 (182.9)	79 (200.7)	72 (182.9)	71 (180.4)	101 (256.6)	62 (157.5)	101 (256.6)	62 (157.5)	101 (256.6)	63 (160.1)	102 (259.1)	56 (142.3)	102 (259.1)	56 (142.3)		
Stratus	85 (215.9)	102 (259.1)	71 (180.4)	109 (276.9)	71 (180.4)	102 (259.1)	85 (215.9)	109 (276.9)	85 (215.9)	102 (259.1)	85 (215.9)	102 (259.1)	85 (215.9)	109 (276.9)	87 (221.0)	90 (228.6)	87 (221.0)	90 (228.6)		
Suburban II	72 (182.9)	144 (365.8)	72 (182.9)	144 (365.8)	72 (182.9)	144 (365.8)	72 (182.9)	144 (365.8)	101 (256.6)	62 (157.5)	101 (256.6)	62 (157.5)	101 (256.6)	62 (157.5)	101 (256.6)	62 (157.5)	101 (256.6)	62 (157.5)		
Tranquility	74 (188.0)	74 (188.0)	75 (190.5)	67 (170.2)	75 (190.5)	74 (188.0)	75 (190.5)	67 (170.2)	91 (231.2)	59 (149.9)	91 (231.2)	59 (149.9)	91 (231.2)	67 (170.2)	92 (233.7)	52 (132.1)	92 (233.7)	52 (132.1)		
Twine (Driftwood, Flagstone, Jewel, Metal, Oatmeal)	76 (193.1)	61 (155.0)	78 (198.2)	55 (139.7)	78 (198.2)	61 (155.0)	78 (198.2)	55 (139.7)	Not available	Not available	Not available	Not available	Not available	67 (170.2)	92 (233.7)	52 (132.1)	92 (233.7)	52 (132.1)		
Twine (Heritage)	75 (190.5)	79 (200.7)	77 (195.6)	71 (180.4)	77 (195.6)	79 (200.7)	77 (195.6)	71 (180.4)	Not available	Not available	Not available	Not available	Not available	69 (175.3)	93 (236.3)	54 (137.2)	93 (236.3)	54 (137.2)		
Wicker (Brownstone, Dawn, Shell, Terracotta, Thyme, Tiger's Eye)	74 (188.0)	76 (193.1)	76 (193.1)	69 (175.3)	76 (193.1)	76 (193.1)	76 (193.1)	69 (175.3)	91 (231.2)	61 (155.0)	91 (231.2)	61 (155.0)	91 (231.2)	69 (175.3)	93 (236.3)	54 (137.2)	93 (236.3)	54 (137.2)		
Wicker (Tawny)	73 (185.5)	72 (182.9)	75 (190.5)	65 (165.1)	75 (190.5)	72 (182.9)	75 (190.5)	65 (165.1)	90 (228.6)	57 (144.8)	90 (228.6)	57 (144.8)	90 (228.6)	65 (165.1)	92 (233.7)	50 (127.0)	92 (233.7)	50 (127.0)		

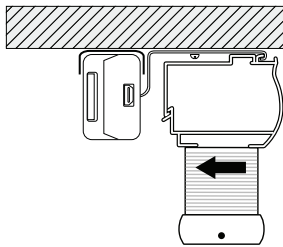
Seams may be added to fabrics to accommodate long shade requirements. Seams will be placed as close to the tube as possible; seam location is not selectable. Seams are visible when the shade is fully extended.

Virtual Cord™ Options

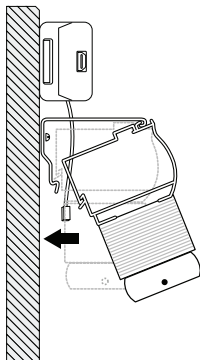
12 Volt Power Considerations



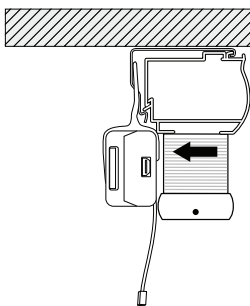
Cellular and Pleated
Battery Consideration



Ceiling/Inside Mount



Outside Mount



Inside Mount

Motors can be powered by batteries, plug-in transformer, or multi-motor power supply. Each shade requires a motor and appropriate power source.

Power Considerations

Larger shades consume more power while operating. When choosing the appropriate power source based upon the shade size we recommend the following power sources for the best performance.

Shade Size square inches (cm ²)	Recommended Power Source
0 – 3,600 (0 – 23,225.8)	Batteries (single or dual), plug-in, or multi-motor power supply
3,600 – 7,200 (23,225.8 – 46,451.5)	Dual battery cases, plug-in, or multi-motor power supply
7,200 (46,451.5)	Plug-in or multi-motor power supply only

Dual battery cases are recommended for larger shades (over 3,600 square inches (23,225.8 cm²)) to extend battery life.

Transformer power is recommended for larger shades (over 7,200 square inches (46,451.5 cm²)) to provide the best experience with regular shade operation.

Battery Case Considerations

Battery power recommended for maximum of 10 shades for best battery performance.

Battery cases are installed outside of the product and can be a challenge to hide in some windows.

For Inside Mounts:

- The cleanest and simplest method available for cellular and pleated shades is the integrated battery case hanger; this hanger attaches directly to a shade bracket to support the battery case while allowing the case to be removed for battery changes; additional recessed space will be needed

For Outside Mounts:

- For outside mounts, battery cases can be installed above or to the side of the shade

NOTE: For best performance, use only AA lithium batteries.

Battery case dimensions:

9¼" (23.5 cm) x

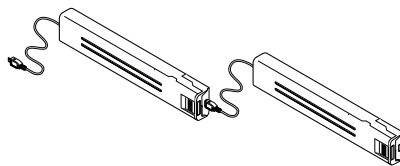
1¼" (3.2 cm) x 7⁄8" (2.3 cm)

Dual battery cases installed end-to-end:

require 21" (53.4 cm) of space
(including connectors)

Battery case minimum recessed space
(installed with bracket):

product minimum recessed space
+ ¾" (2.0 cm)



Dual Battery Cases

Virtual Cord™ Options

12 Volt Power Considerations

Solar/Roller, Natural Shades, Soft, Layered, and Sheer Shade Battery Considerations



Soft/Natural Shades
Battery Case
Mounted Behind



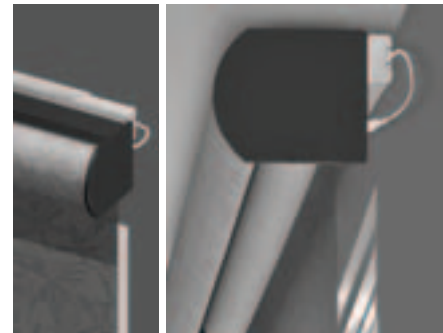
Soft/Natural Shades
Battery Case
Mounted on Headrail



Solar Shades
Outside Mount
Battery Pack



Solar Shades
Inside Mount Battery Pack



Solar, Layered, and
Sheer Shades with Cassette
Battery Pack

Transformer power recommended for shade systems of any quantity.

DC Plug-in Transformer Considerations

A power outlet must be within cord length to power motor.

Transformer includes 72" (182.9 cm) power cord and a 96" (243.9 cm) extension cable (power cord and extension cord cannot be cut to length or trimmed).

A transformer is recommended on all shades over 7,200 square inches (46,451.5 cm²).

Transformer dimensions

4" (10.2 cm) wide x 2" (5.1 cm) deep (not including plug) x 1½" (3.9 cm) tall (as you look at the plug in the outlet).

NOTE: Due to the many variations of installations, wire management components are not included with your motorized shade system. There are numerous wire management products available at your local hardware store or home improvement center to help disguise the power cord when using a plug-in transformer. An example of a popular wire management accessory, is wire channel. Wire channel is a vinyl sheathing that can be placed along the window casing or wall that will house and conceal exposed wiring for a clean and professional appearance.

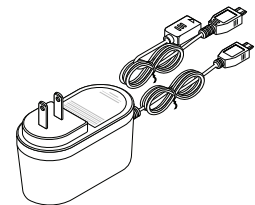
Multi-Motor Power Supply Considerations

Transformer enclosure is generally mounted in an accessible indoor location such as a basement, utility closet, or garage. Motors are "home run" wired to the panel using 16 gauge wire.

12 Volt: 10-motor power supply available for all Graber® products and includes connectors.

Dimensions: 12" (30.5 cm) wide x 6" (15.3 cm) deep x 12" (30.5 cm) high.

CAUTION: A licensed electrician is required for all line voltage electrical connections. All local and NEC codes must be followed.



DC Plug-In Transformer

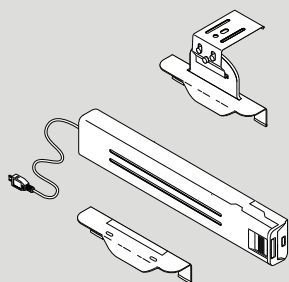


Multi-Motor Power Supply

Virtual Cord™ Options

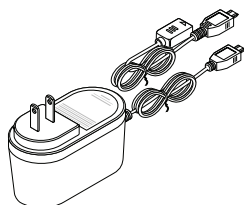
12 Volt Power Components

NOTE: These power supplies are not compatible with Somfy® RTS motors.



Battery Case

- Reloadable: available with or without batteries
- Multiple mounting options provided
- Simple case design allows for easy battery replacement
- Recommend shades greater than 3,600 square inches (23,225.8 cm²) utilize two single battery cases (dual cases) to extend battery life
- Shades exceeding 7,200 square inches (46,451.5 cm²) we recommend a plug-in transformer
- For best performance, use only AA lithium batteries (each case requires 8 AA lithium batteries)
- 48" (122.0 cm) and 96" (243.9 cm) extensions available, maximum of 2 per motor
- Battery power recommended for maximum of 10 shades for best battery performance

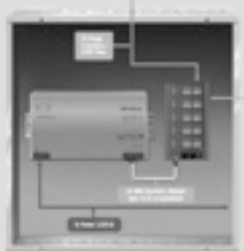


Plug-In Transformer

- Eliminates the need for batteries
- Small plug profile
- Cord can be concealed behind curtains or along trim
- 72" (182.9 cm) power cord and 96" (243.9 cm) extension cable (power cord and extension cable cannot be cut to length)
- 48" (122.0 cm) and 96" (243.9 cm) extensions available, maximum of 2 per motor
- We recommend shades greater than 7,200 square inches (46,451.5 cm²) utilize a transformer to eliminate changing batteries frequently
- Available in White only

Transformer Dimensions

- 4" (10.2 cm) wide x 2" (5.1 cm) deep (not including plug) x 1½" (3.8 cm) tall (as you look at the plug in the outlet)
- Wire management components are not included with your motorized shade system
 - Refer to 12 volt power considerations for further details



Multi-Motor Power Supply

- Used when direct wiring the motorized window coverings
- Each motor is "home run" wired back to the multi-motor power supply using 16 gauge 2 conductor wire (must be purchased locally; Graber® does not supply)
- Power supply includes connectors
- Must be mounted indoors, NEMA rated
- Dimensions: 12" (30.5 cm) wide x 6" (15.3 cm) deep x 12" (30.5 cm) high
- 120 volt AC 3.3 amps

12 Volt Motors

- All Graber low voltage: up to 10 motors per power supply

Radio Frequency (RF) Controls

NOTE: These controls are not compatible with Somfy RTS motors.



Virtual Cord (Included with Every Shade Except Mezzanine and Overture Shades)

The Virtual Cord is meant to control an individual shade (one to one). This helps assure simple, reliable control as well as simplifying the process of readjusting pre-set positions should it become necessary—without removing power from adjacent shades. However, the Virtual Cord can be paired to multiple shades to provide group control.

- Not available for sheer or layered shades
- Includes convenient mounting hardware
- Battery included—CR2430
- Available in White



Single Channel Remote (Included with Mezzanine and Overture Shades)

- Used to control single shades or a group of shades simultaneously
- Set and use an intermediate position for your shades
- Includes convenient mounting hardware
- Battery included—CR2430
- Available in White



Single-Channel Remote Decorator Wall Plate Kit (Single-Channel Remote Sold Separate)

- Provides attractive mounting option to match look of existing light switches
- Locates the remote where most convenient for the user
- Helps prevent misplacing of remote when not in use
- Mounts flush to wall with included anchors, no cutting of drywall needed
- Available in White only

Virtual Cord™ Pricing Chart and Options Pricing

Low Voltage Radio Frequency (RF)

See options section for illustrations of power and control items listed below. Select motor package and add to price of shade.

Motor Package Pricing: Includes Motor, Power Source, and Control

Motor packages include the two button Virtual Cord control for all shade types excluding Mezzanine and Overture shades. The three button single-channel remote is supplied with Mezzanine and Overture shade packages.

Filled Single Battery Case (Includes 8 AA Lithium Batteries) and Control	\$529
Unfilled Single Battery Case and Control	471
Plug-In Transformer with 72" (182.9 cm) Power Cord, 96" (243.9 cm) Extension Cable and Control	529
Dual cases recommended for shades over 3,600 square inches (23,225.8 cm ²) to extend battery life.	
Filled Dual Battery Case and Control	\$629
Unfilled Dual Battery Case and Control	512

Direct Wiring Motors to Multi-Motor Power Supply

Motor and Control Only	\$430
Multi-Motor Power Supply • Up to 10 motors per power supply	1020

Optional Control

Single Channel Remote (Standard for Mezzanine and Overture Shades)	\$102
Single Channel Decorator Wall Plate Kit	15

Optional Replacement Controls and Installation Accessories

Virtual Cord Control (Not Available with Mezzanine and Overture Shades)	\$81
Unfilled Single Battery Case	41
Plug-In Transformer with 72" (182.9 cm) Power Cord and 96" (243.9 cm) Extension Cable	99
Multi-Motor Power Supply • Up to 10 motors per power supply	1020
48" (122.0 cm) Extension Cable	18
96" (243.9 cm) Extension Cable	22



Graber is a brand of Springs Window Fashions, the Best Experience Company 

Graber and the Graber logo are registered trademarks of Springs Window Fashions, LLC.

19-0618-03 (05/17) 17-5106|S17-5082