

MOTORIZED SHADES WITH VIRTUAL CORD

TABLE OF CONTENTS

FEATURES AND SIZE CONSIDERATIONS

Summary Features and Warranty	2
Size Considerations: CrystalPleat® Cellular and Pleated Shades Motorized Lift	3

OPTIONS

Power Considerations	4
Power Components	5
Radio Frequency Controls	5

PRICING CHART AND OPTION PRICING

Low Voltage Radio Frequency Motor Package Pricing	7
---	---



Features

MOTORIZED SHADE FEATURES

Refer to individual base price list for specific option and size information for the product being ordered.

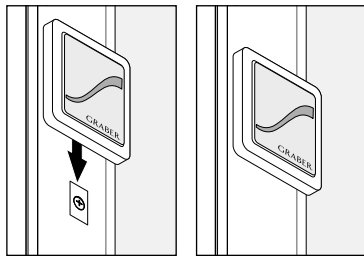
RADIO FREQUENCY (RF) FEATURES

New motorized Graber shades featuring virtual cord control. The new motors utilize a unique communication protocol referred to as "iO". This protocol provides precise, reliable shade operation and simplified programming. Graber shades provide quiet operation, clean design and allow the perfect scene to be created in every home. Each shade includes all components for superior installation and operation. These automated shades feature the following:

- Simple, intuitive control by means of the unique Virtual Cord™ (Included with every shade)
- An optional single channel remote is also available to control shades individually or in a group
- Shades can be conveniently operated from virtually anywhere in the home, up to 65 feet
- Consistent motor speed regardless of size or weight
- Efficiently manages energy (heat gain and loss)
- A safer alternative to accessible cords that are traditionally used to operate window coverings; ideal for homes with children and pets
- Clean design with an integrated antenna and LED operation confirmation
- Push button control on shade end cap provides both a programming function at set-up and shade operation should the control be misplaced
- LED feedback on controls simplify operation and programming
- Quiet, smooth shade operation
- New design operates larger shades and narrower widths even in the tallest heights
- Limit safety protection feature simplifies reprogramming, should it be necessary, while protecting the shade from damage
- Convenient soft-start and soft-end add a touch of class to shade travel
- Low voltage motorization requires no costly electrical hard-wiring

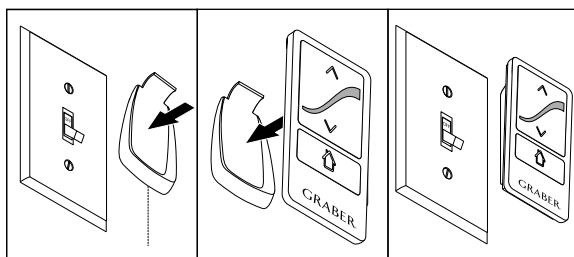
Control options available:

- Virtual Cord™: Simple, convenient control at the window treatment location or control across the room. (Included with shade)

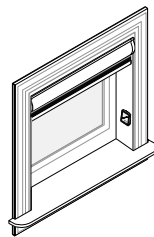


Virtual Cord™ Control

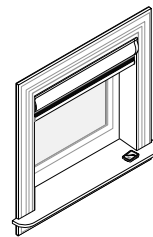
- Optional single channel remote: control can be conveniently mounted or placed on a table and controlled from anywhere in the room
 - Create group shade control
 - Set and control an intermediate position



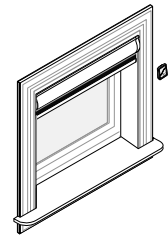
Single Channel Remote



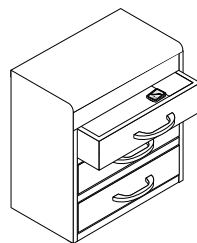
Attached to the window molding



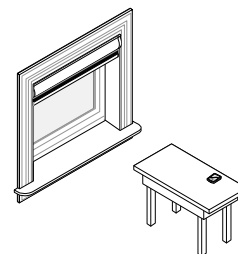
Laying on the window sill



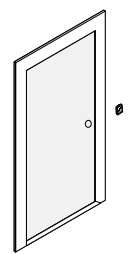
Attached to the wall



Inside of a drawer



On a table



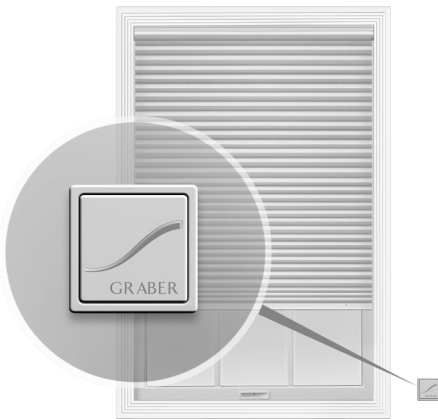
By the door

WARRANTY

Motorization components and accessories have a five-year limited warranty, excluding batteries.

Features and Size Considerations

CRYSTALPLEAT® CELLULAR AND PLEATED SHADES MOTORIZED LIFT



Features

- Simple, intuitive control by means of the unique Virtual Cord™ (Included with every shade)
- An optional single channel remote is also available to control shades individually or in a group
- Shades can be conveniently operated from virtually anywhere in the home, up to 65 feet
- Consistent motor speed regardless of size or weight
- Efficiently manages energy (heat gain and loss)
- A safer alternative to accessible cords that are traditionally used to operate window coverings; ideal for homes with children and pets
- Clean design with an integrated antenna and LED operation confirmation
- Push button control on shade end cap provides both a programming function at set-up and shade operation should the control be misplaced
- LED feedback on controls simplify operation and programming
- Quiet, smooth shade operation
- Limit safety protection feature simplifies reprogramming, should it be necessary, while protecting the shade from damage
- Convenient soft-start and soft-end add a touch of class to shade travel
- Low voltage motorization requires no costly electrical hard-wiring
- Powered with batteries or plug-in transformer
- Motor located on right side within headrail
- Not available with Bottom Up/Top Down, Top Down Only, Sky Track, Specialty shapes or multiple shades on one headrail
- Not available with hold-down brackets

Control options available:

- Virtual Cord™: Simple, convenient control at the window treatment location or portable control across the room. (Included with shade)
- Optional, single channel remote: Control can be hand held or wall mounted. Conveniently control shades individually or in a group

NOTE: Motorization components and accessories have a five-year limited warranty, excluding batteries.

Cellular Size Considerations

	Minimum Width*	Maximum Width	Minimum Height	Maximum Height
All Fabric Styles except Cocoon	20" (50.8 cm)	144" (365.8 cm)†	9" (22.9 cm)	144" (365.8 cm)
Cocoon	20" (50.8 cm)	86" (218.4 cm)	9" (22.9 cm)	96" (243.8 cm)

* For all inside mount applications, 3/8" (.95 cm) deduction is taken by the manufacturer on overall width.

† Based on fabric width

Pleated Size Considerations

	Minimum Width*	Maximum Width	Minimum Height	Maximum Height
1" (2.5 cm) FashionPleat®	18" (45.7 cm)	144" (365.8 cm)†	9" (22.9 cm)	96" (243.8 cm)
1" (2.5 cm) EvenPleat®		120" (304.8 cm)†	6" (15.2 cm)	96" (243.8 cm)
2" (5.1 cm) EvenPleat®	20" (50.8 cm)	144" (365.8 cm)†	12" (30.5 cm)	120" (304.8 cm) **

* For all inside mount applications, 3/8" (.95 cm) deduction is taken by manufacturer on overall width.

** Height limited to 96" (243.8 cm) with overlap

† Based on fabric width with overlaps



Options

POWER CONSIDERATIONS

Motors can be powered by batteries or plug-in transformer, each shade requires a motor and power source.

Battery Case Considerations

Battery cases are installed outside of the product and can be a challenge to hide in some windows.

For Inside Mounts:

- The cleanest and simplest method available for cellular and pleated shades is the integrated battery case hanger. This hanger attaches directly to a shade bracket to support the battery case while allowing the case to be removed for battery changes. Additional recessed space will be needed.

For Outside Mounts:

- For outside mounts, battery cases can be installed above or to the side of the shade.

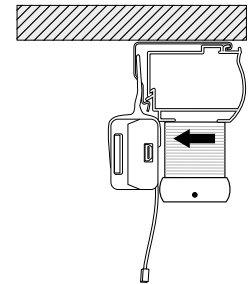
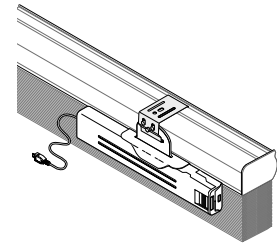
Dual Battery Cases are recommended on all shades (Cellular and Pleated Shades) over 3,600 sq. in. to extend battery life

Battery Case dimensions: 9¼" (23.5 cm) x 1¼" (3.2 cm) x 7⁄8" (2.2 cm)

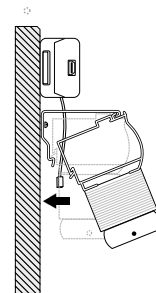
Dual Battery Cases installed end-to-end: require 21" (53.3 cm) of space (including connectors)

Battery Case minimum recessed space (installed with bracket): Product minimum recessed space + ¾" (2.0 cm)

NOTE: For best performance, use only AA lithium batteries.



Inside Mount



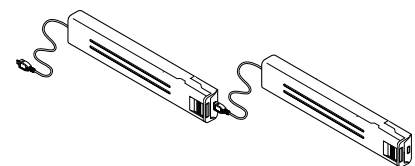
Outside Mount

Power Considerations

Shade Size	Power Source
0 – 3,599 sq. in.	Battery Case
3,600 – 7,199 sq. in.	Dual Battery Case
7,200 sq. in.	Plug In Transformer

Dual Battery Cases are recommended for larger shades to extend battery life.

Plug In Transformers are recommended for larger shades to provide the best experience with regular shade operation. The best option for shade dimension.



Dual Battery Cases

DC Plug-in Transformer Considerations

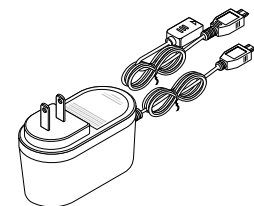
A power outlet must be within cord length to power motor.

Transformer includes 72" (182.9 cm) power cord and a 96" (243.8 cm) extension cable (power cord cannot be cut to length or trimmed)

A transformer is recommended on all shades (Cellular and Pleated) over 7,200 sq. in.

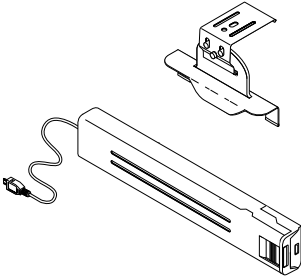
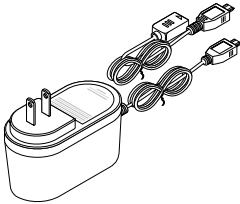
Transformer Dimensions



4" (10.2 cm) Wide x 2" (5.1 cm) Deep (not including plug) x 1½" (3.8 cm) Tall (as you look at the plug in the outlet)



DC Plug-in Transformer

Options

POWER COMPONENTS	
	<p>Battery Case</p> <ul style="list-style-type: none"> • Reloadable: available with or without batteries • Each case includes hanger, an additional shade bracket is included with Cellular and Pleated Shades for mounting • Simple case design allows for easy battery replacement • Recommend shades (Cellular and Pleated Shades) greater than 3,600 square inches utilize two single battery cases (dual cases) to extend battery life. • Shades exceeding 7,200 sq. in. we recommend a plug-in transformer • For best performance, use only AA lithium batteries (each case requires 8 AA lithium batteries)
	<p>Plug-in Transformer</p> <ul style="list-style-type: none"> • Eliminates the need for batteries • Small plug profile • Cord can be concealed behind curtains or along trim • 72" (182.9 cm) power cord and 96" (243.8 cm) extension cable (Power cord and extensions cannot be cut to length) • We recommend shades (Cellular and Pleated Shades) greater than 7,200 square inches utilize a transformer to eliminate changing batteries frequently • Available in White only <p>Transformer Dimensions 4" (10.2 cm) Wide x 2" (5.1 cm) Deep (not including plug) x 1½" (3.8 cm) Tall (as you look at the plug in the outlet)</p>

RADIO FREQUENCY CONTROLS	
	<p>Virtual Cord™ (included with every shade)</p> <p>The Virtual Cord is meant to control an individual shade (one to one). This helps assure simple, reliable control as well as simplifying the process of readjusting pre-set positions should it become necessary – without removing power from adjacent shades. However, the Virtual Cord can be paired to multiple shades to provide group control.</p> <ul style="list-style-type: none"> • Compatible with Graber/Somfy i/O protocol motors • Includes convenient mounting hardware • Battery Included • Available in White
	<p>Single Channel Remote</p> <ul style="list-style-type: none"> • Compatible with Graber/Somfy i/O protocol motors • Used to control single shades or a group of shades simultaneously • Set and use an intermediate position for your shades • Includes convenient mounting hardware • Battery Included • Available in White

Pricing Chart and Option Pricing

LOW VOLTAGE RADIO FREQUENCY

See options section for illustrations of power and control items listed below. Select motor package and add to price of shade.

Motor Package Pricing: Includes Motor, Power Source and Virtual Cord™ Control	
Filled Single battery case (includes 8AA Lithium batteries) and Virtual Cord™ control	\$529
Unfilled Single battery case and Virtual Cord™ control	\$471
Plug-In Transformer with 72" (182.9 cm) power cord and 96" (243.8 cm) extension cable and Virtual Cord™ control	\$529
Dual cases recommended for shades over 3,600 sq. in. to extend battery life.	
Filled Dual battery case and Virtual Cord™ control	\$629
Unfilled Dual battery case and Virtual Cord™ control	\$512

Optional Control	
Single Channel Remote	\$102

Optional Replacement Controls and Installation Accessories	
Virtual Cord™ Control	\$81
Unfilled Single battery case	\$41
Plug-in Transformer with 72" (182.9 cm) power cord and 96" (243.8 cm) Extension Cable	\$99
48" Extension Cable (121.9 cm)	\$18
96" Extension Cable (243.8 cm)	\$22



GRABER[®]

Graber is a brand of Springs Window Fashions, the Best Experience Company

graberblinds.com

Graber and the Graber logo are registered trademarks of Springs Window Fashions, LLC.
Springs Window Fashions, Middleton WI

19-0618-00 (01/15) 142547/S140891